



MAKE YOUR OWN TRAIL

DON'T FOLLOW THE PATH
BLAZE YOUR OWN TRAIL

ASIS PRIME LAM
0.8 MM DECORATIVE LAMINATES

Index

Sr. No.	Design No.	Finish	Design Name	Page No.	Sr. No.	Design No.	Finish	Design Name	Page No.	Sr. No.	Design No.	Finish	Design Name	Page No.	Sr. No.	Design No.	Finish	Design Name	Page No.
1	101	MR	Super White	7	69	347	SD	Cream Rubber	49	137	496	MR	Burbon Wood	1	205	752	SD	Brown Zebrano	46
2	101	SD	Super White	53	70	351	MZ	Raw Oak	15	138	496	SD	Burbon Wood	32	206	753	SD	Oak	43
3	102	BR	Frosty White	9	71	351	SD	Raw Oak	43	139	497	MR	Charcoal Wood	1	207	754	SD	Flowery Pine	46
4	102	DR	Frosty White	26	72	352	SD	Yellow Oak	39	140	497	SD	Charcoal Wood	32	208	762	SD	Spinosa	38
5	102	DS	Frosty White	24	73	353	MZ	Café Oak	15	141	498	SD	Lotus Mahogany	49	209	763	MR	Seronita Light	8
6	102	EA	Frosty White	11	74	353	OC	Café Oak	21	142	509	SD	Slubs	48	210	763	SD	Seronita Light	47
7	102	LY	Frosty White	17	75	353	SD	Café Oak	39	143	521	SD	Victorian	41	211	764	MR	Seronita Dark	8
8	102	ML	Frosty White	20	76	354	MZ	Rosy Oak	15	144	522	SD	Chocolate Wood	31	212	764	SD	Seronita Dark	47
9	102	SD	Frosty White	53	77	354	OC	Rosy Oak	21	145	530	ML	St. Line Wenge	20	213	765	DS	Myrica	23
10	103	SD	Mysore Ivory	53	78	354	SD	Rosy Oak	39	146	530	SD	St. Line Wenge	45	214	765	MR	Myrica	4
11	104	SD	Ivory	53	79	355	OC	Cappuccino Oak	21	147	532	SD	Dark Ash	40	215	765	SD	Myrica	40
12	106	SD	Silver Grey	53	80	355	SD	Cappuccino Oak	37	148	534	BT	Fine Line Dark	25	216	767	DS	Galaxy	23
13	108	AT	Slate	16	81	356	SD	Saw Cut Oak	39	149	534	SD	Pine Line Dark	46	217	767	MR	Galaxy	7
14	108	EA	Slate	11	82	357	MR	Noon Knots	4	150	535	SD	Legno Fine Line	42	218	767	SD	Galaxy	46
15	108	SD	Slate	53	83	357	SD	Noon Knots	34	151	564	SD	Fine Wenge	45	219	768	MR	Rain Forest	4
16	111	GL	Marker Board	52	84	358	MR	Eve Knots	4	152	570	MR	Platano Light	2	220	768	SD	Rain Forest	46
17	115	EA	Bloody Mary	11	85	358	SD	Eve Knots	34	153	570	SD	Platano Light	31	221	770	SD	Indiana Cherry	52
18	115	MR	Bloody Mary	7	86	412	AT	Oxford Cherry	16	154	570	BR	Platano Light	10	222	771	BR	Florence Walnut	10
19	115	SD	Bloody Mary	53	87	412	SD	Oxford Cherry	51	155	571	MR	Platano Dark	2	223	771	MR	Florence Walnut	3
20	115	LY	Bloody Mary	17	88	414	SD	Rockford Oak	29	156	571	SD	Platano Dark	31	224	771	SD	Florence Walnut	37
21	128	CR	Canadian White	27	89	415	SD	Swiss Pear	29	157	571	BR	Platano Dark	10	225	772	BR	Sicilian Walnut	10
22	128	MR	Canadian White	7	90	416	SD	Porcini	29	158	576	SD	Japanese Birch	41	226	772	CK	Sicilian Walnut	14
23	128	ON	Canadian White	28	91	437	DR	Mahogany	26	159	577	SD	Beige Wood	43	227	772	LY	Sicilian Walnut	18
24	128	SD	Canadian White	53	92	437	MR	Mahogany	6	160	579	CR	Vintage Walnut	27	228	772	MR	Sicilian Walnut	3
25	129	GL	Graphic Board	52	93	437	SD	Mahogany	49	161	579	SD	Vintage Walnut	40	229	772	SD	Sicilian Walnut	40
26	132	BR	Black	10	94	447	BT	Walnut	25	162	581	SD	Dark Rift	48	230	774	MR	Albizia	3
27	132	DR	Black	26	95	447	SD	Walnut	31	163	583	SD	Woody Wenge	45	231	774	SD	Albizia	42
28	132	DS	Black	24	96	448	SD	Pear Wood	49	164	584	AT	Rich Olive	16	232	775	SD	Nuvo Tkani	30
29	132	ML	Black	20	97	449	BT	Sapelli	25	165	584	CR	Rich Olive	27	233	776	SD	Gris Tkani	30
30	132	ON	Bloody Mary	28	98	449	MR	Sapelli	6	166	584	SD	Rich Olive	38	234	777	SD	Oiled Sack	30
31	132	SD	BLACK	53	99	449	SD	Sapelli	43	167	585	DR	Dyed Cedar	26	235	778	SD	Oiled Sack	30
32	133	SD	Chalk Board	52	100	450	ML	Walnut Pear	20	168	585	SD	Dyed Cedar	40	236	801	MR	Terrazo	5
33	150	CR	Nagpur Orange	27	101	450	SD	Walnut Pear	37	169	586	MR	Ancient Oak	6	237	801	SD	Terrazo	35
34	150	SD	Nagpur Orange	53	102	451	AT	Jungle Walnut	16	170	586	SD	Ancient Oak	46	238	802	EA	Bainbrook Brown	12
35	154	SD	Sapphire Blue	53	103	451	LY	Jungle Walnut	17	171	587	SD	Dyed Syca	51	239	802	SD	Bainbrook Brown	35
36	155	MR	Electric Blue	7	104	451	MR	Jungle Walnut	4	172	589	SD	African Desert	44	240	803	BR	Stone Mine	9
37	155	ON	Electric Blue	28	105	451	SD	Jungle Walnut	37	173	598	SD	Syca Feel	51	241	803	EA	Stone Mine	12
38	155	SD	Electric Blue	53	106	462	MR	Sukupira	3	174	630	SD	Match Teak	51	242	803	SD	Stone Mine	36
39	156	AT	Coffee	16	107	462	SD	Sukupira	34	175	631	SD	Match Beech	52	243	803	MR	Stone Mine	5
40	156	SD	Coffee	53	108	468	SD	Canada Pine	43	176	634	LY	Floral Wenge	17	244	804	EA	Sea Stone	11
41	158	SD	Pink	53	109	473	ON	Yellow Wenge	28	177	634	SD	Floral Wenge	45	245	804	MR	Sea Stone	5
42	159	CR	Red	27	110	473	SD	Yellow Wenge	45	178	702	SD	Pine Light (HZ)	44	246	804	SD	Sea Stone	36
43	159	ML	Red	20	111	475	SD	Brown Oak	42	179	703	SD	Pine Dark (HZ)	44	247	804	BR	Sea Stone	9
44	159	MR	Red	7	112	481	MR	Pearl Grey	7	180	709	MR	Chess	8	248	818	BT	Black Hairline	25
45	159	SD	Red	53	113	481	SD	Pearl Grey	50	181	709	SD	Chess	51	249	818	MR	Black Hairline	7
46	166	SD	Dark Grey	53	114	482	MR	Faux Wenge	7	182	710	BT	Light Olive	25	250	818	SD	Black Hairline	50
47	167	SD	Cloudy Grey	53	115	482	SD	Faux Wenge	45	183	710	CK	Light Olive	13	251	820	SD	Magnolia	48
48	170	MR	Spring White	8	116	483	SD	Laurenti Wenge	46	184	710	SD	Light Olive	38	252	823	MZ	Nut	15
49	170	SD	Spring White	53	117	484	SD	Light Linsosa	42	185	711	BT	Dark Olive	25	253	823	SD	Nut	33
50	171	SD	Pinkish	53	118	485	SD	Dark Linsosa	42	186	711	CK	Dark Olive	13	254	824	SD	Eden Light	49
51	172	DS	Greeny	24	119	486	DR	Light Amazonic	26	187	711	SD	Dark Olive	38	255	825	SD	Eden Dark	45
52	172	SD	Greeny	53	120	486	ML	Light Amazonic	19	188	712	MR	Spruce	2	256	826	MR	Purple Carnation	8
53	307	SD	Dusk Maple	52	121	486	SD	Light Amazonic	41	189	712	SD	Spruce	38	257	826	SD	Purple Carnation	47
54	309	SD	Dyed Zebrano	43	122	487	DR	Dark Amazonic	26	190	714	SD	Lowell	48	258	827	MR	White Carnation	8
55	310	SD	Ripe Bamboo	46	123	487	ML	Dark Amazonic	19	191	715	MR	Rustic Stone	5	259	827	SD	White Carnation	47
56	311	SD	Sizzling Bebrano	43	124	487	SD	Dark Amazonic	41	192	715	SD	Rustic Stone	35	260	828	MR	Gold Carnation	8
57	314	SD	Barcode	47	125	489	MR	Polar Oak	6	193	716	MR	Sea Green Stone	5	261	828	SD	Gold Carnation	47
58	315	SD	Light Ligure	50	126	489	SD	Polar Oak	39	194	716	SD	Sea Green Stone	35	262	829	SD	Cream Tweed	36
59	318	SD	Pistachio Varese	44	127	490	MR	Classic Oak	6	195	717	SD	Linen	48	263	830	SD	Grey Tweed	36
60	319	SD	Warm Varese	44	128	490	SD	Classic Oak	39	196	728	CK	Morelia	13	264	831	SD	Brown Tweed	36
61	331	SD	White Syca Maple	49	129	491	OC	Silver Pine	21	197	728	LY	Morelia	18	265	832	MR	Tassili	7
62	332	SD	Cyca Maple	51	130	491	SD	Silver Pine	37	198	728	SD	Morelia	38	266	832	SD	Tassili	50
63	335	SD	Cherry Beech	52	131	492	MZ	Alaska Pine	15	199	729	MR	Castelo	6	267	833	SD	Cream Acacia	33
64	338	SD	Cypress	46	132	492	OC	Alaska Pine	21	200	729	SD	Castelo	33	268	834	SD	Brown Acacia	33
65	339	MR	Siamese	2	133	492	SD	Alaska Pine	37	201	730	CK	Retro Teak	14	269	918	AT	Hawfinch	16
66	339	SD	Siamese	34	134	493	AF	Light Riftwood	22	202	730	SD	Retro Teak	40	270	918	SD	Hawfinch	31
67	343	SD	Sandy Beech	51	135	493	SD	Light Riftwood	39	203	733	SD	3d Effect	50	271	919	SD	Lapwing	43
68	345	SD	Coffee Beech	51	136	495	SD	Ambrosia Maple	33	204	738	SD	Maze	47					

● New Shade

- ASIS Prime Lam is available in extraordinary finishes like Bark, Lily, Mosaic, Aura, Orchard, Beta, Designer Stripe, Ash Texture, Drizzle, Checkers, Earth, Suede, Glossy, Onda, Cnss, Mirror & Microline in 0.8 mm thickness (other thickness is available on request).
- ASIS Prime Lam is available in size of 2440 mm x 1220 mm (8' x 4').
- ASIS warrants that all products are free from manufacturing defects and that they are fit and suitable for usual purposes under normal and proper use. The product must be inspected prior to installation and our liability will be limited to the extent of the cost of product only.
- The product must be inspected thoroughly before its use. No claim for the visual defects will be accepted or entertained if the product is cut or altered in any manner.
- Note: The ASIS Prime Lam Shade Card is Not For Sale, the Sample Swatch only represents the design, colour and finish. It does not represent the actual thickness.



ASIS PRIME LAM

0.8 MM DECORATIVE LAMINATES

Advantages

- Indigenous world standard machinery ensures world-class quality.
- Manufactured with specially formulated in-house resins for long term use which retains the original gloss and colour.
- Durability with extra power and strength to resist abrasion.
- Carpenter friendly due to uniform, well sanded back surface.
- ASIS Prime Lam confirms to Indian and International Quality Standards.
- ASIS Prime Lam has a unique technology developed through intensive R&D.
- Imported papers with primary pigments, also makes it colourfast.
- It not only confirms to BIS Standards, but actually exceeds it.
- Confirms to international standards set by NEMA.
- The papers for ASIS Prime Lam 0.8mm are specially selected, impregnated with Melamine and Phenolic resins and then pressed together under heat & very high pressure.
- ASIS Prime Lam a uniform, well sanded back surface in Imported Sander machine ensures better adherence of adhesive and more efficient use of Glue.

MAKE YOUR OWN TRAIL
LOW THE PATH
DONT FOL THE TRAIL
BLAZE



Mirron



339 MR

Siamese



570 MR

Platano Light



496 MR

Burbon Wood



497 MR

Charcoal Wood



712 MR

Spruce



571 MR

Platano Dark



771 MR

Florence Walnut



774 MR

Albizia



357 MR

Noon Knots



358 MR

Eve Knots



462 MR

Sukupira



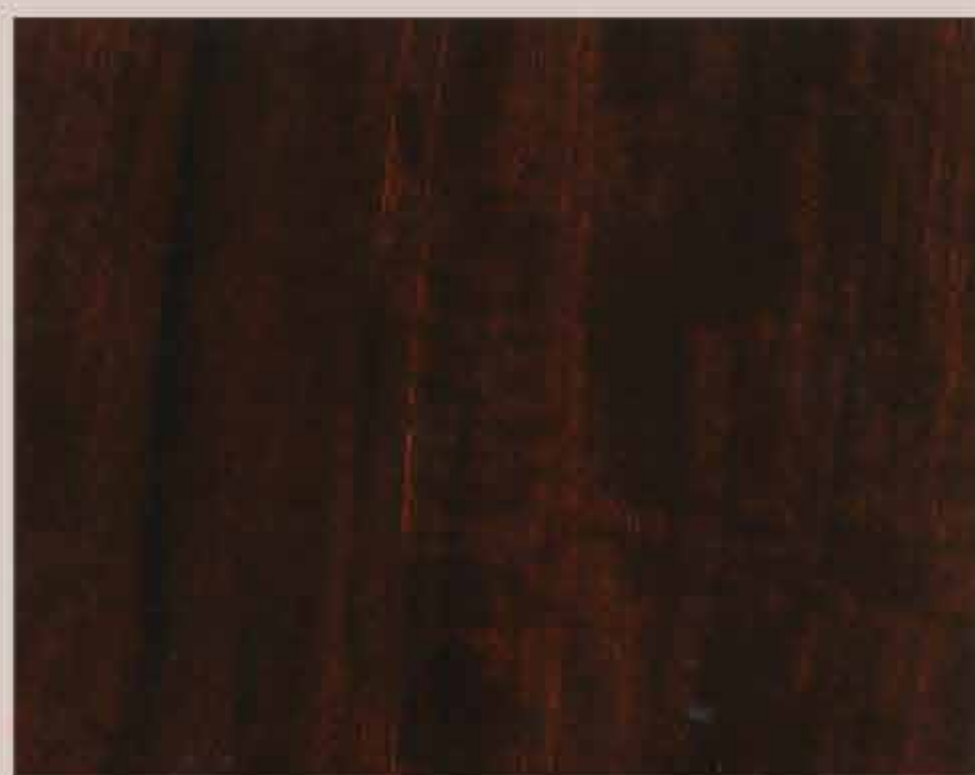
768 MR

Rain Forest



765 MR

Myrica



772 MR

Sicilian Walnut



451 MR

Jungle Walnut



801 MR Terrazo



715 MR Rustic Stone



803 MR Stone Mine



716 MR Sea Green Stone



804 MR Sea Stone



449 MR Sapelli



729 MR Castelo



437 MR Mahogany



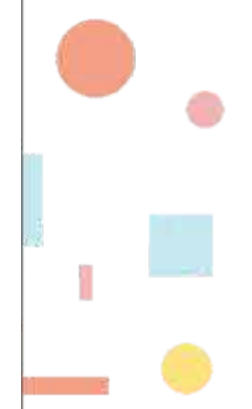
586 MR Ancient Oak



489 MR Polar Oak



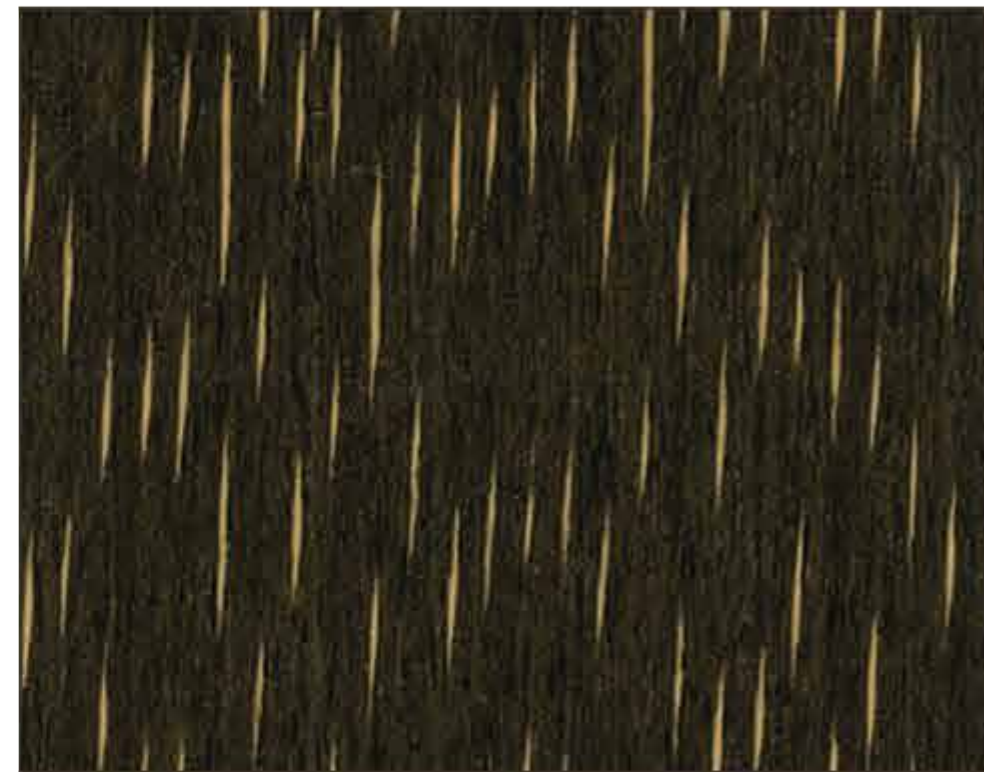
490 MR Classic Oak





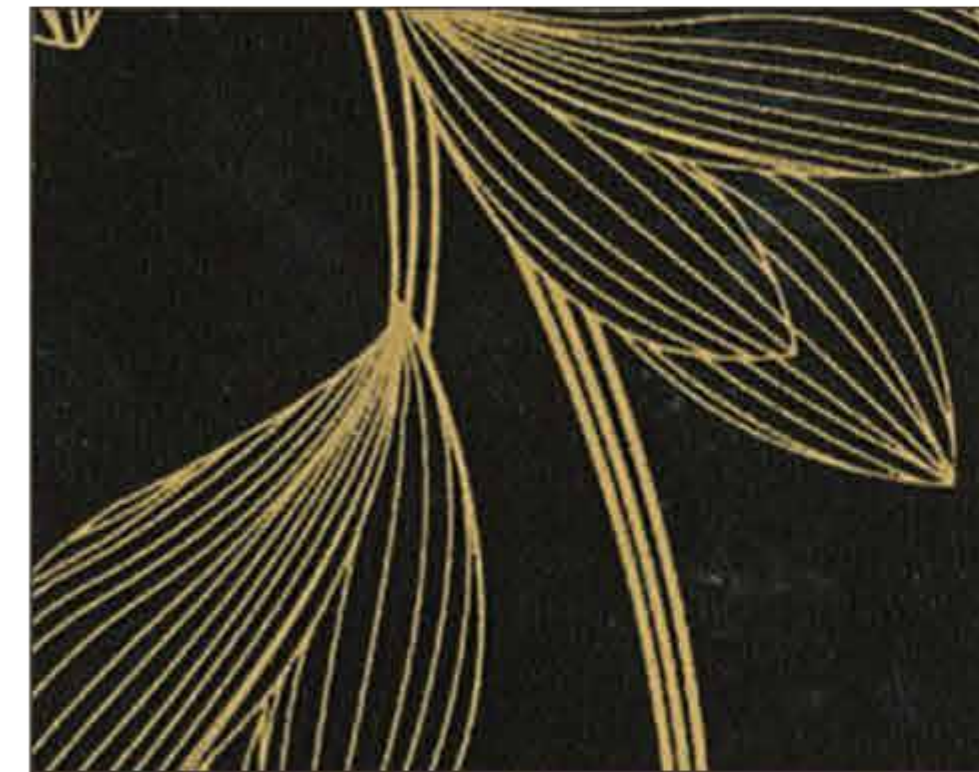
482 MR

Faux Wenge



767 MR

Galaxy



828 MR

Gold Carnation



709 MR

Chess



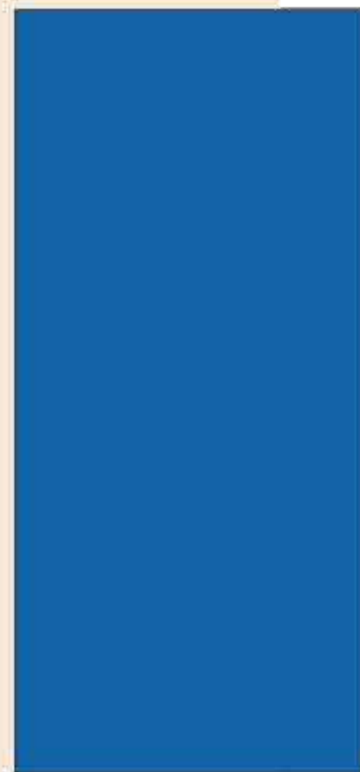
170 MR

Spring White



101 MR

Super White



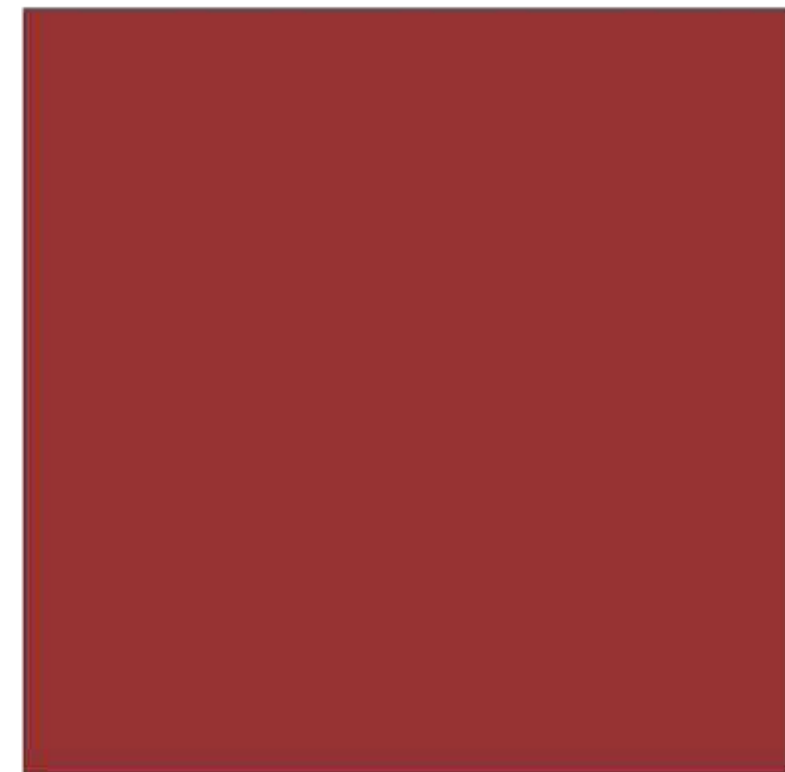
155 MR

Electric Blue



159 MR

Red



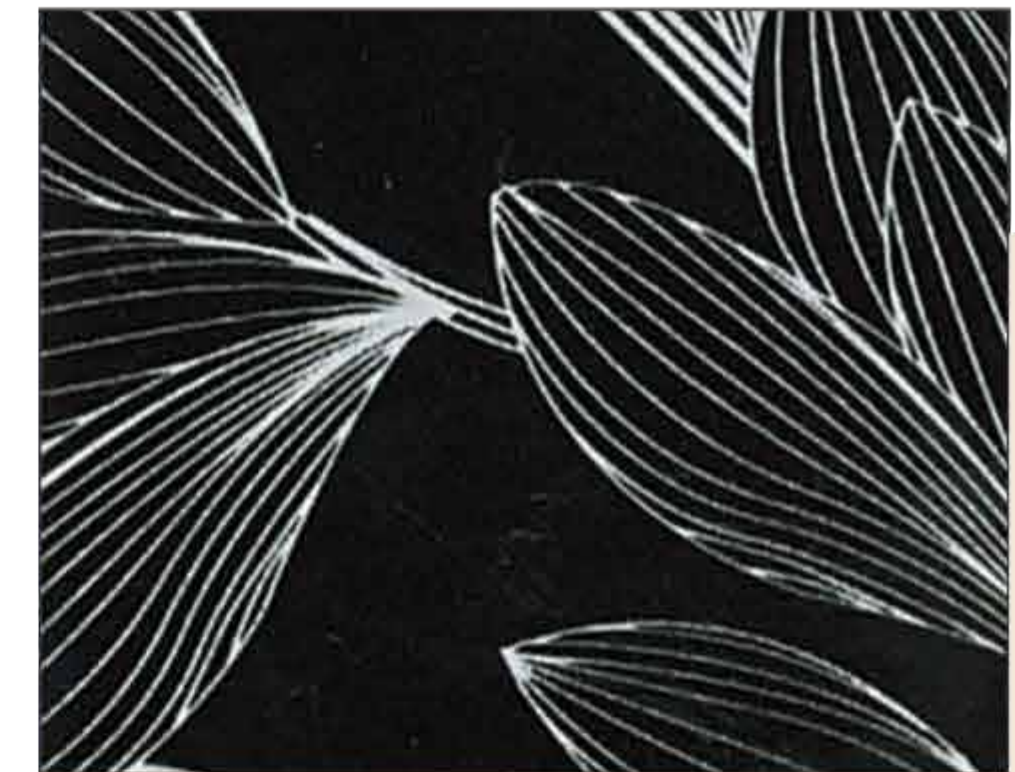
115 MR

Bloody Mary



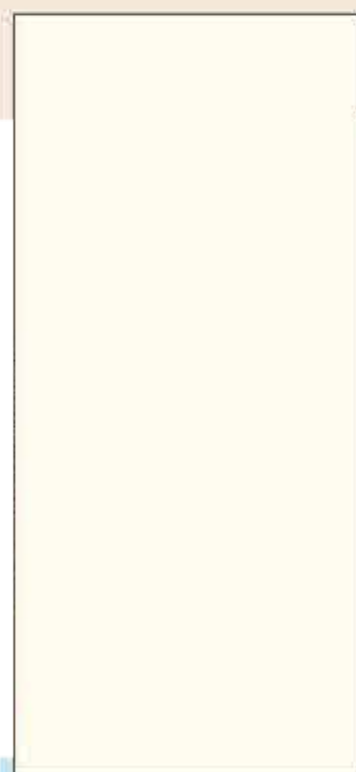
826 MR

Purple Carnation



827 MR

White Carnation



128 MR

Canadian White



481 MR

Pearl Grey



832 MR

Tassili



818 MR

Black Hairline



763 MR

Seronita Light



764 MR

Seronita Dark

Shaping
Dreams

Bark



102 BR

Frosty White



ASIS PRIME LAM
0.8 MM DECORATIVE LAMINATES



570 BR

Platano Light



803 BR

Stone Mine



804 BR

Sea Stone



132 BR

Black



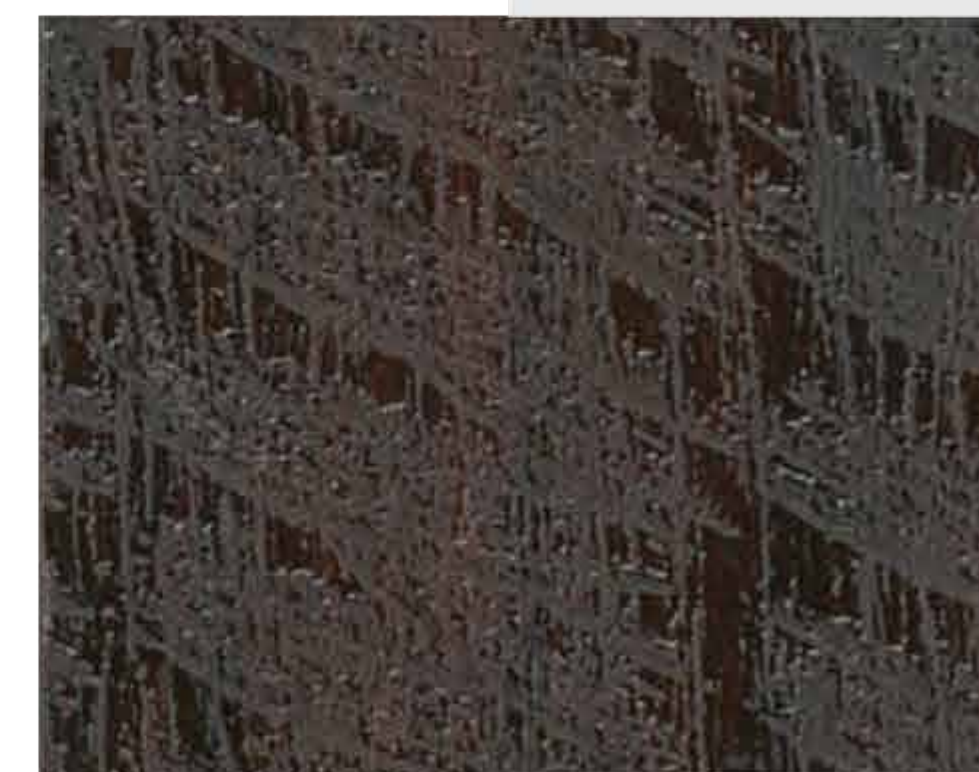
571 BR

Platano Dark



771 BR

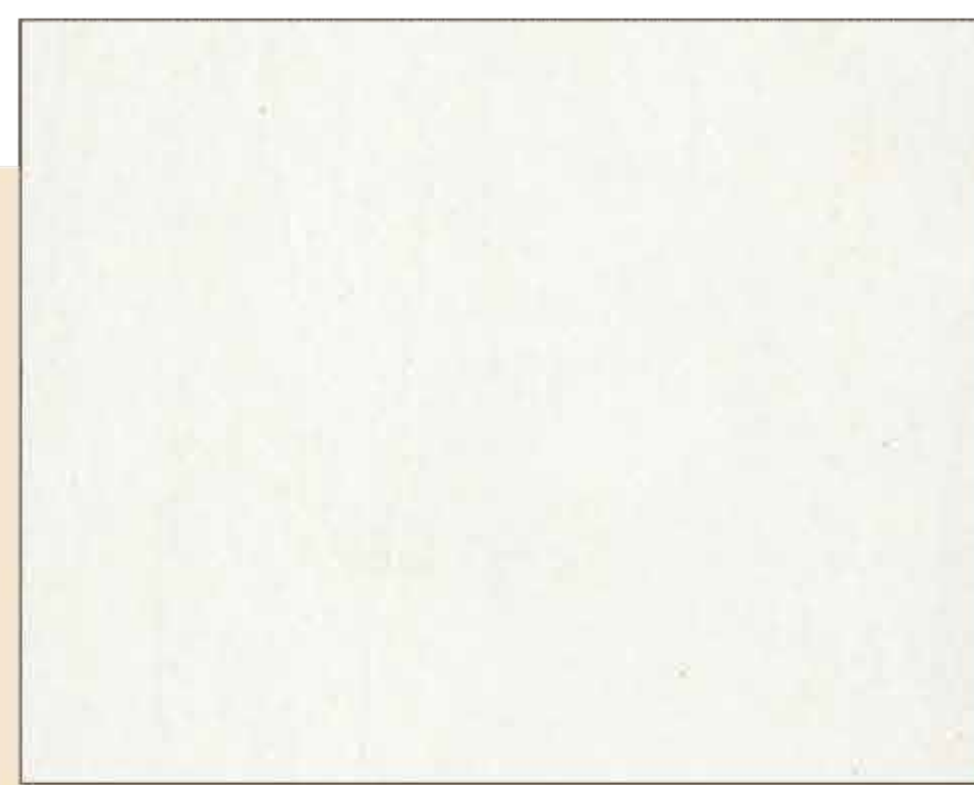
Florence Walnut



772 BR

Sicilian Walnut

Amazing
— experience —



102 EA

Frosty White



804 EA

Sea Stone



108 EA

Slate



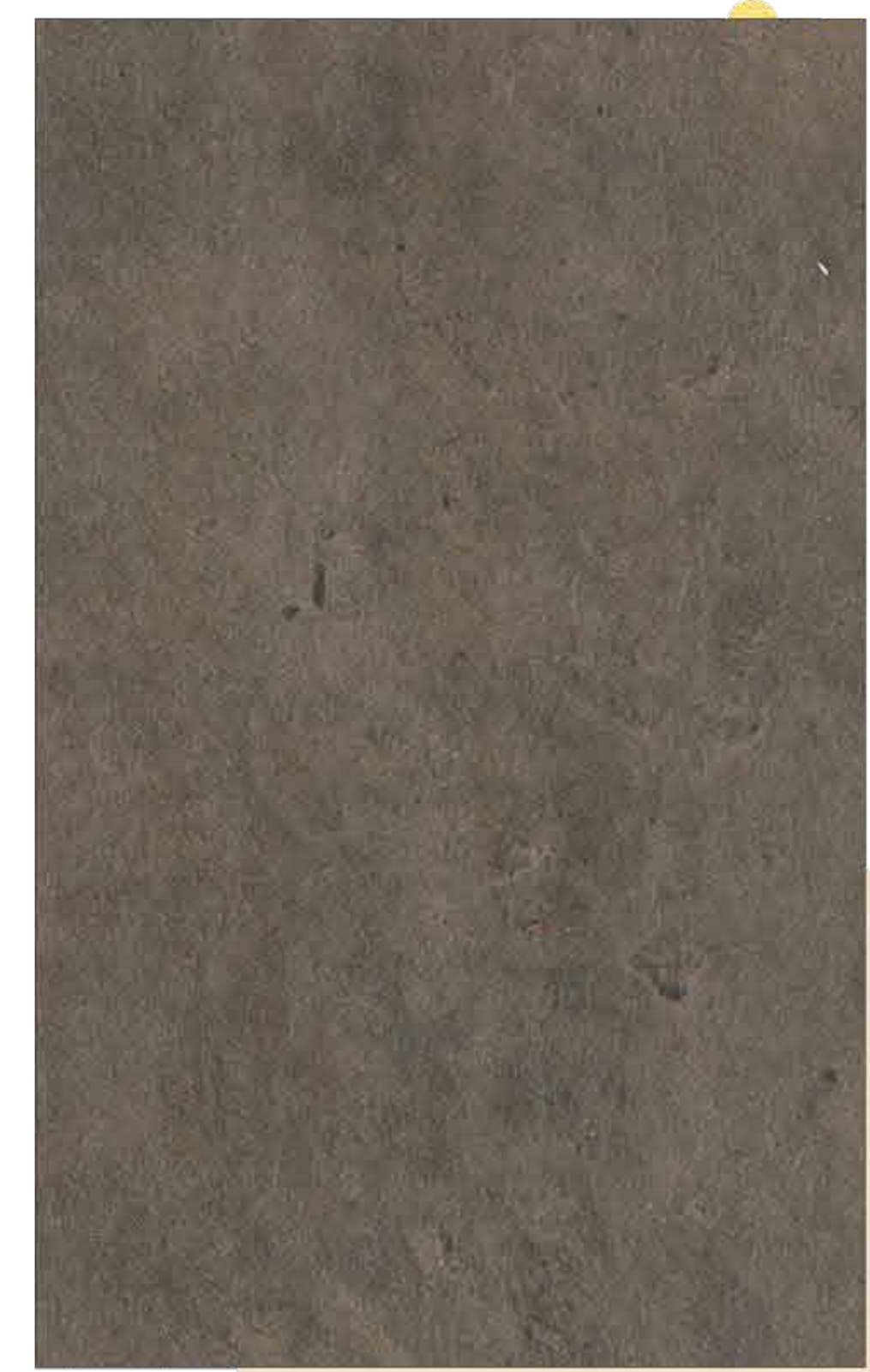
115 EA

Bloody Mary



802 EA

Bainbrook Brown

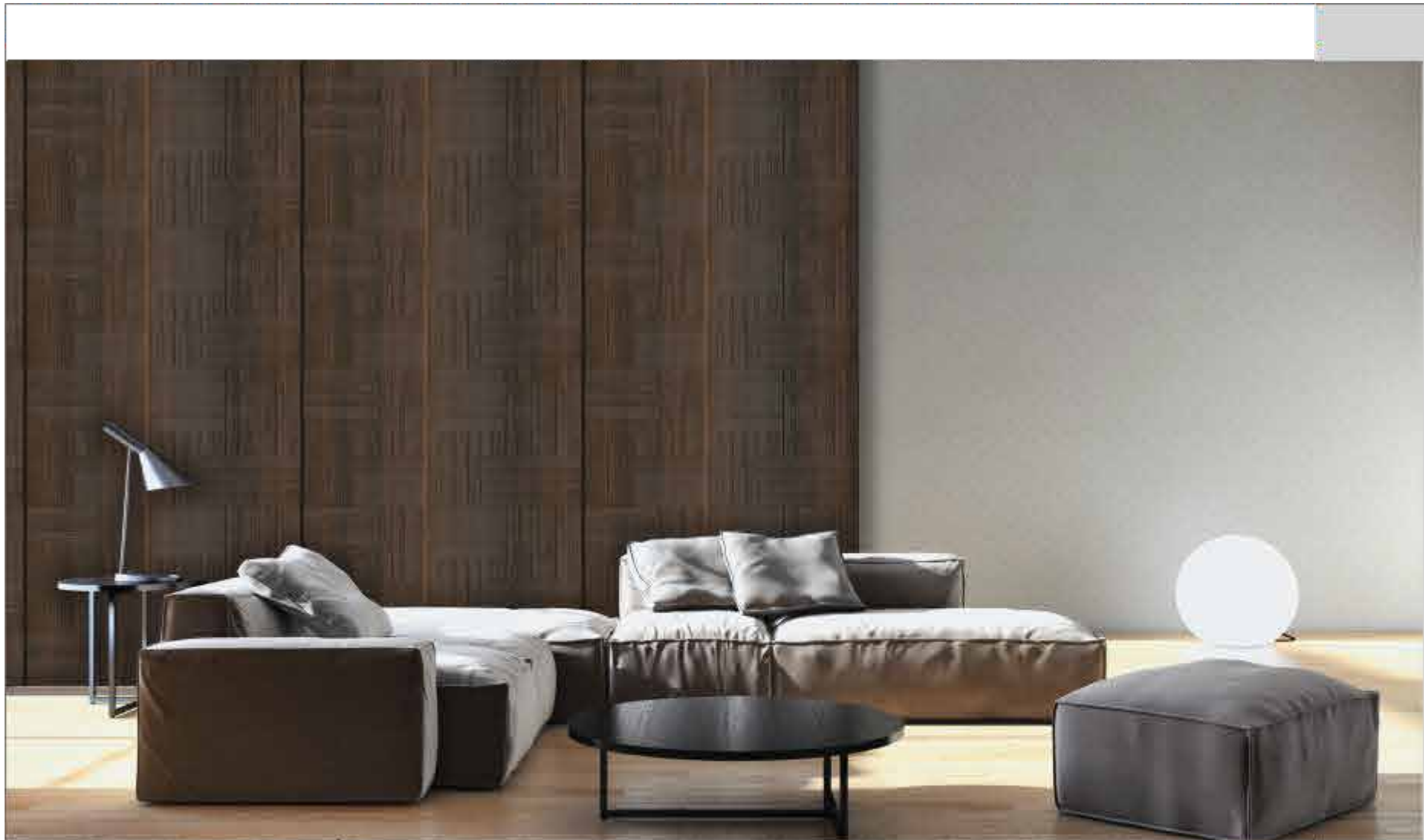


803 EA

Stone Mine



inspiring
— Livings —



Future design

Checkers

ASIS PRIME LAM
0.8 MM DECORATIVE LAMINATES



710 CK

Light Olive



728 CK

Morella



711 CK

Dark Olive



772 CK

Scicilian Walnut



730 CK

Retro Teak



Mosaic



354 MZ

Rosy Oak



Ash



918 AT

Hawfinch



584 AT

Rich Olive



823 MZ

Nut



353 MZ

Cafe Oak



412 AT

Oxford Cherry



451 AT

Jungle Walnut



492 MZ

Alaska Pine



351 MZ

Raw Oak

Shaping
— Dreams —



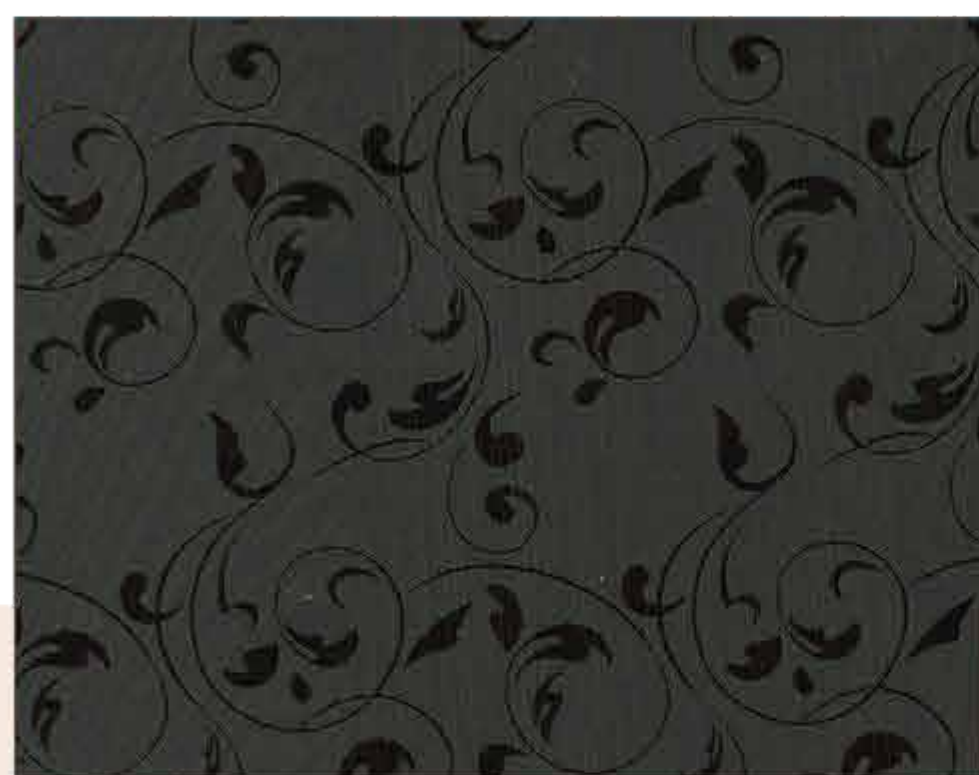
108 AT

Slate



156 AT

Coffee



634 LY

Floral Wenge



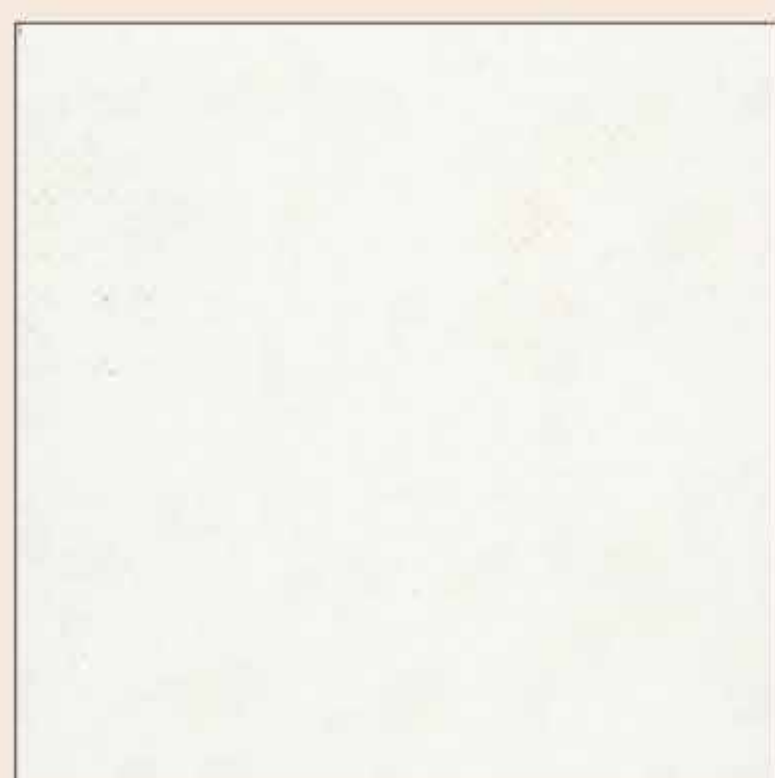
451 LY

Jungle Walnut

Lilly



Creative
concept



102 LY

Frosty White



115 LY

Bloody Mary



728 LY

Morella



772 LY

Sicilian Walnut

Micro Line



530 ML

St. Line Wenge



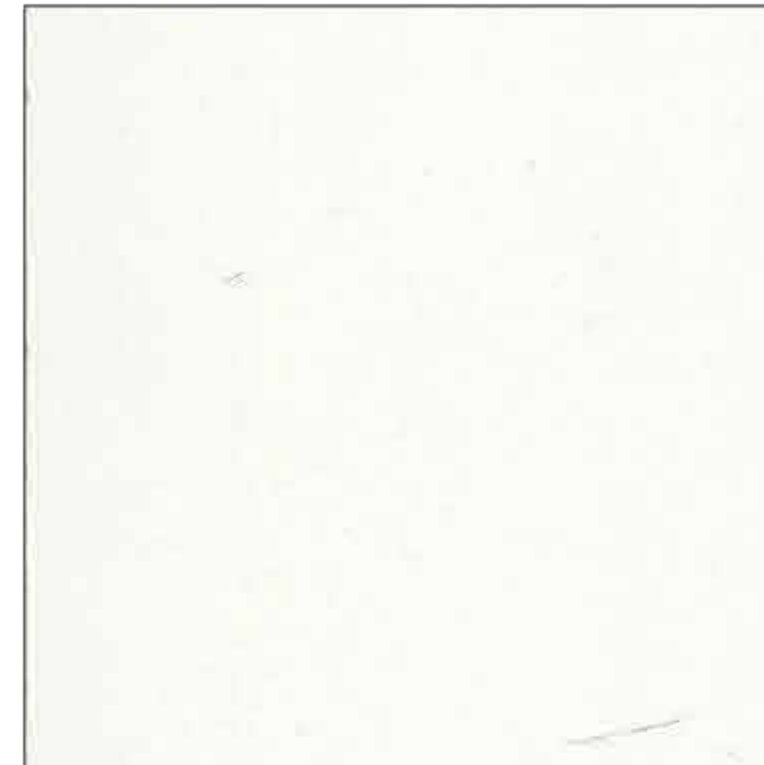
486 ML

Light Amazonic



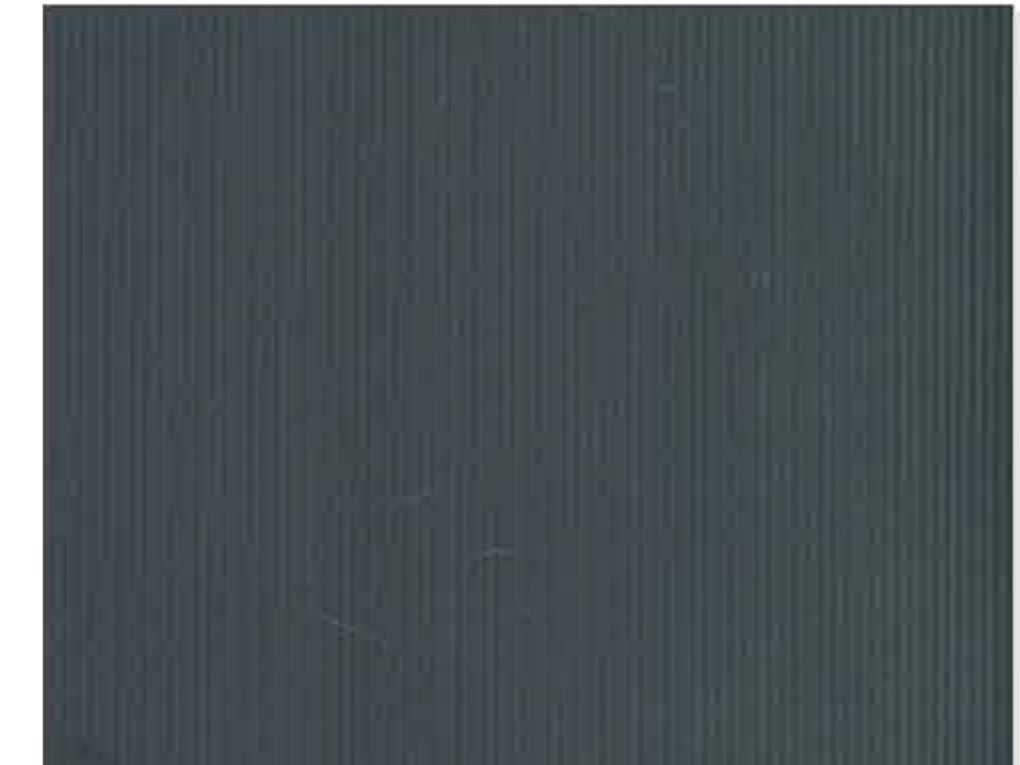
487 ML

Dark Amazonic



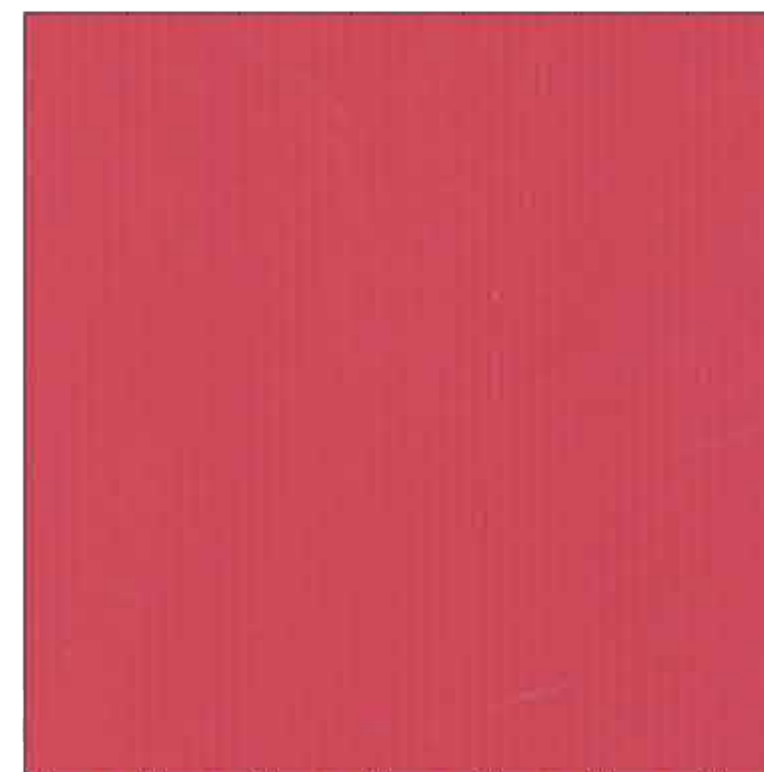
102 ML

Frosty White



450 ML

Walnut Pear



159 ML

Red



132 ML

Black

inspiring
Living

Orchard



492 OC

Alaska Pine



Aura

Amazing
— experience —



353 OC

Cafe Oak



491 OC

Silver Pine



355 OC

Cappuccino Oak



354 OC

Rosy Oak



493 AF

Light Riftwood



Designer Strip



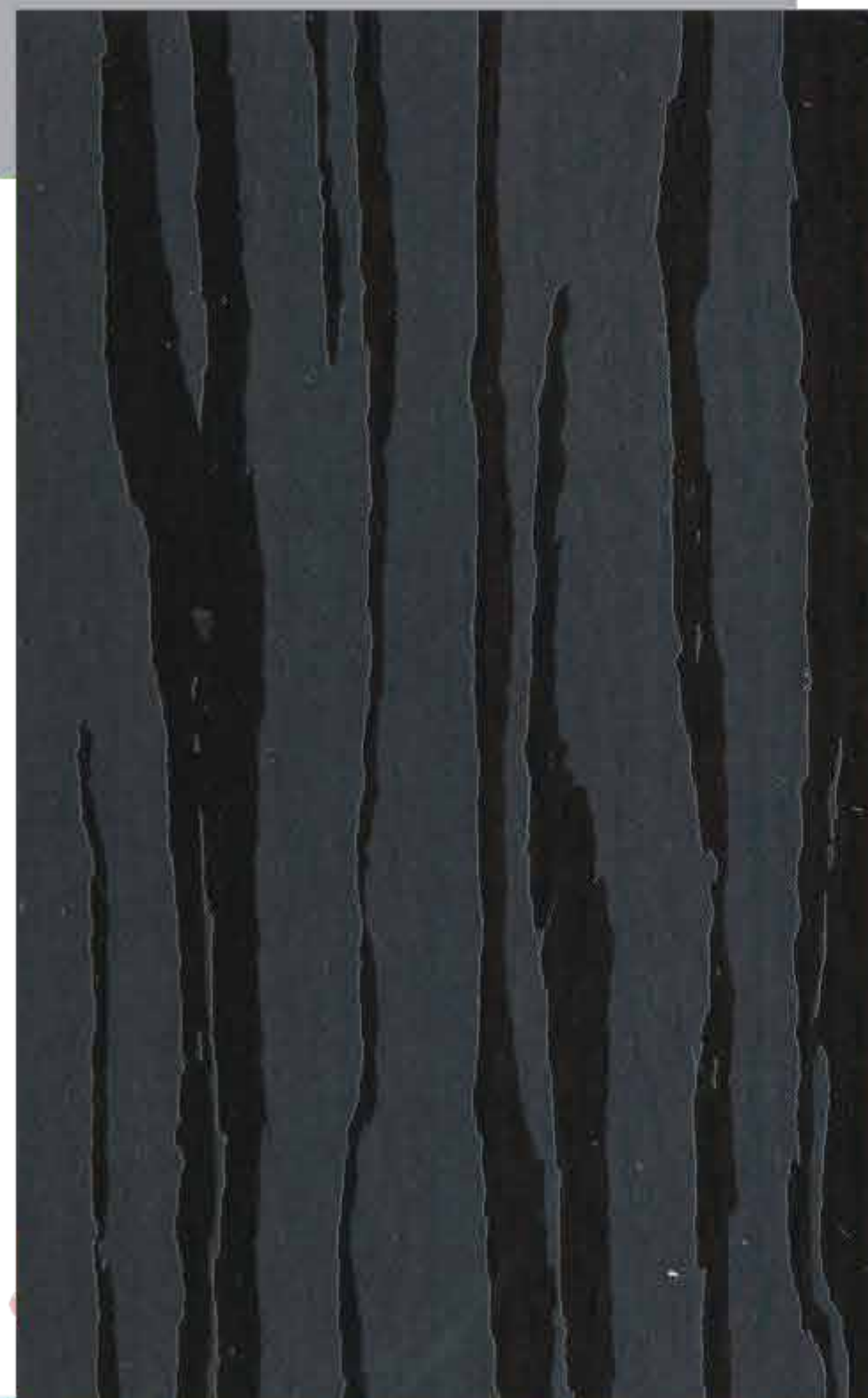
132 DS

Black



102 DS

Frosty White



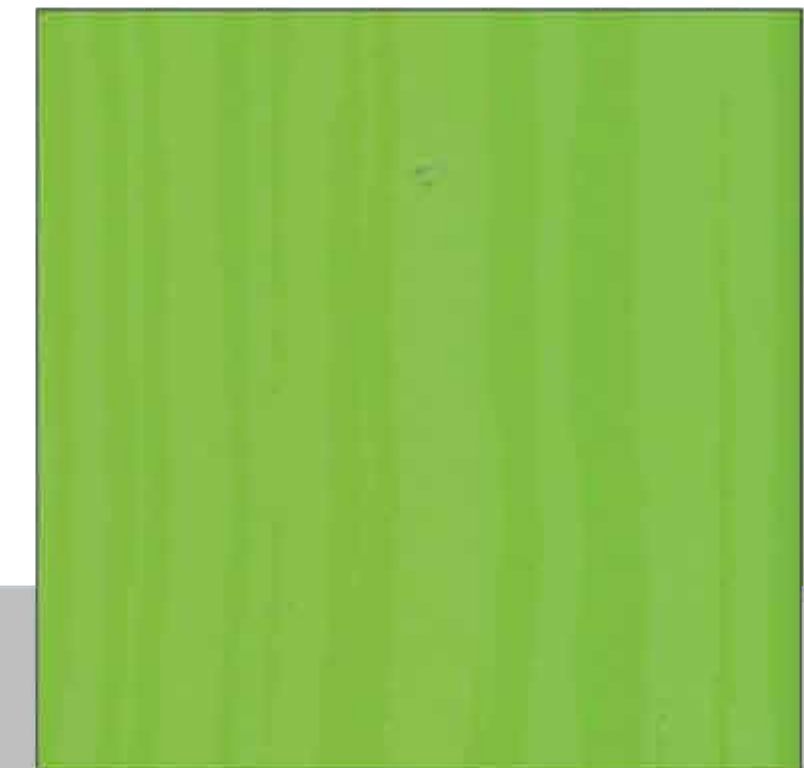
765 DS

Myrica



767 DS

Galaxy



172 DS

Greeny



The expression of original ideas



Beta



818 BT

Black Hairline



534 BT

Fine Line Dark

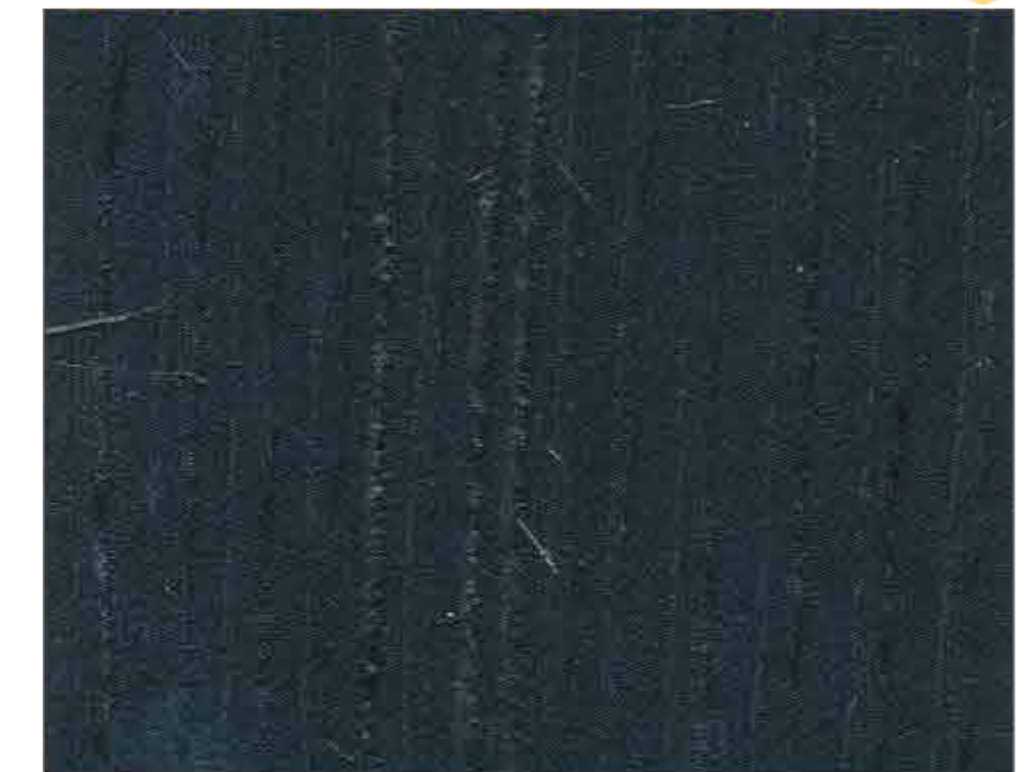
Drizzle

ASIS PRIME LAM
0.8 MM DECORATIVE LAMINATES



102 DR

Frosty White



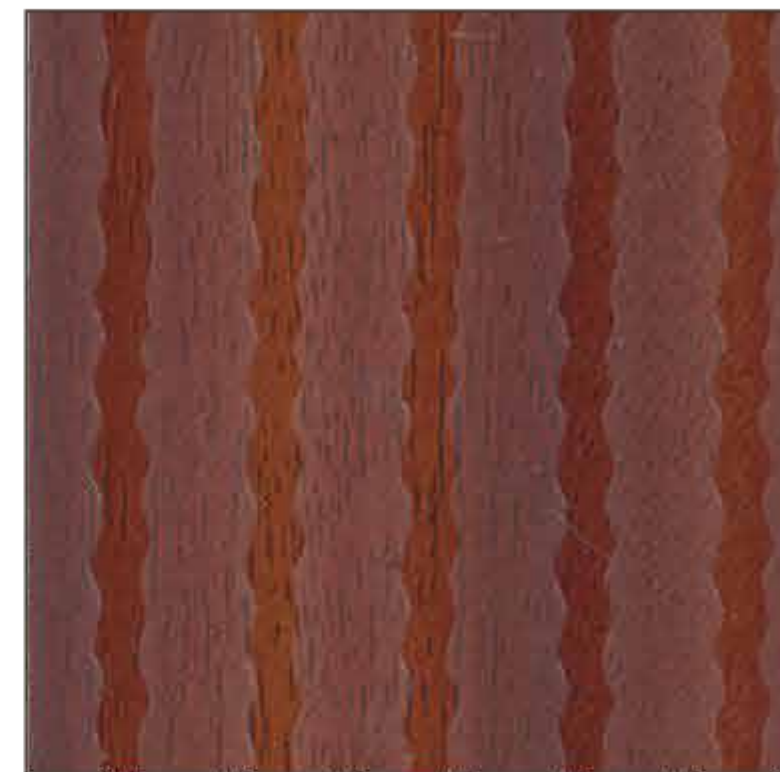
132 DR

Black



447 BT

Walnut



449 BT

Sapelli



437 DR

Mahogany



585 DR

Dyed Cedar



711 BT

Dark Olive



710 BT

Light Olive



486 DR

Light Amazonic



487 DR

Dark Amazonic

Criss



579 CR

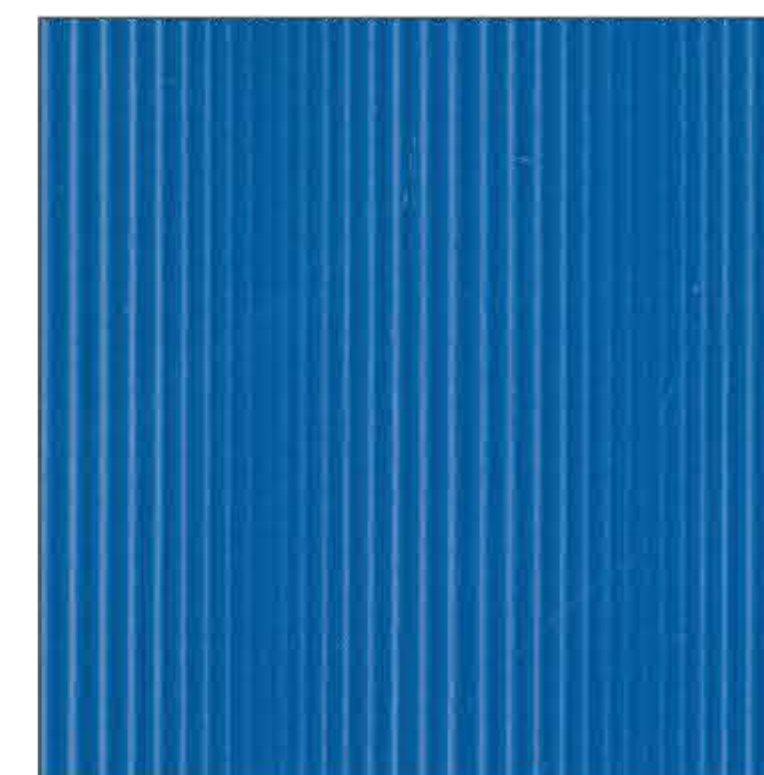
Vintage Walnut

Onda



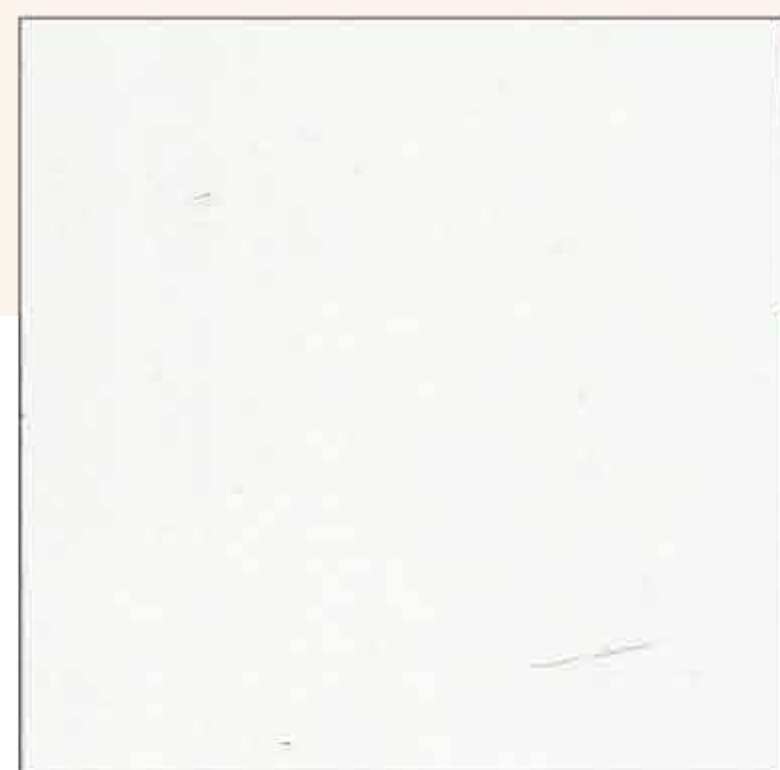
128 ON

Canadian White



155 ON

Electric Blue



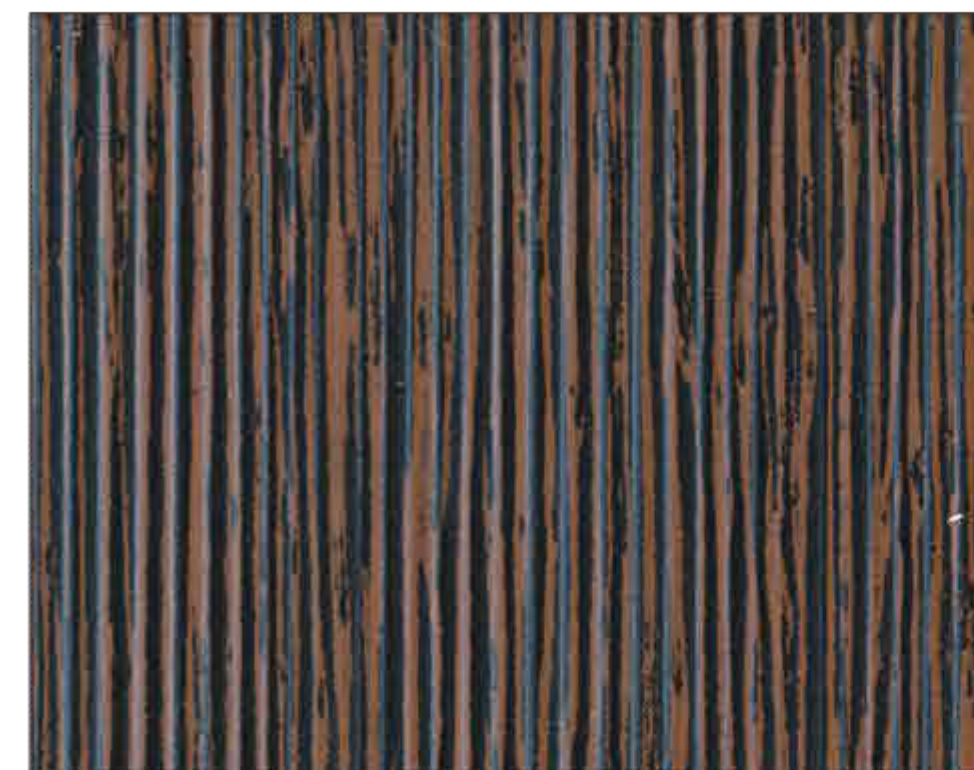
128 CR

Canadian White



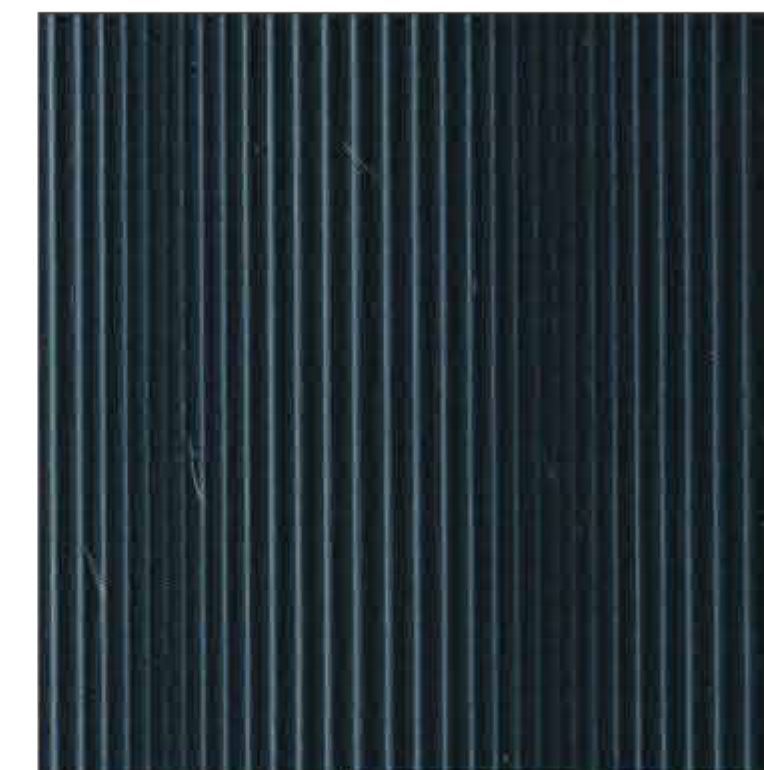
584 CR

Rich Olive



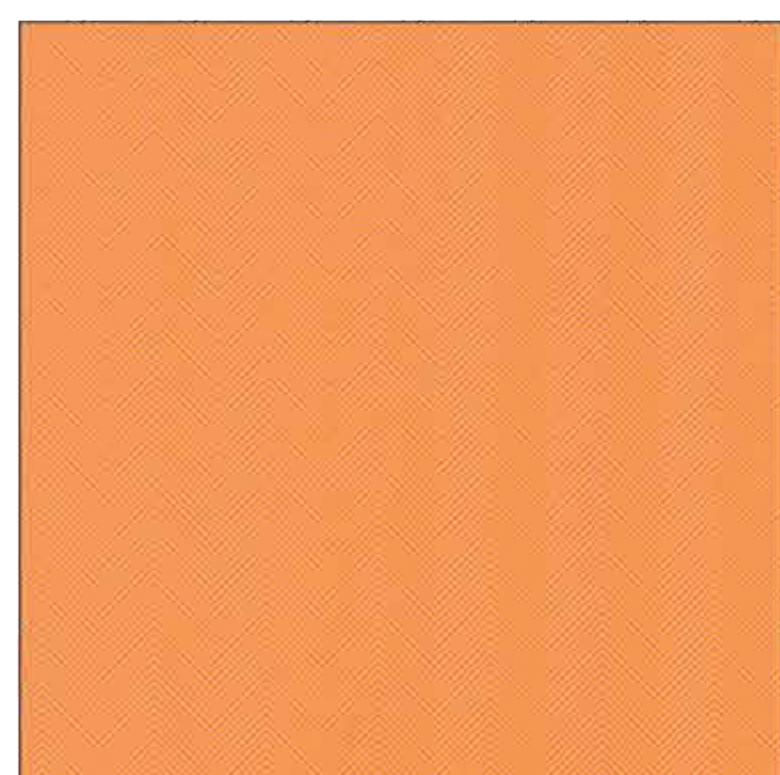
473 ON

Yellow Wenge



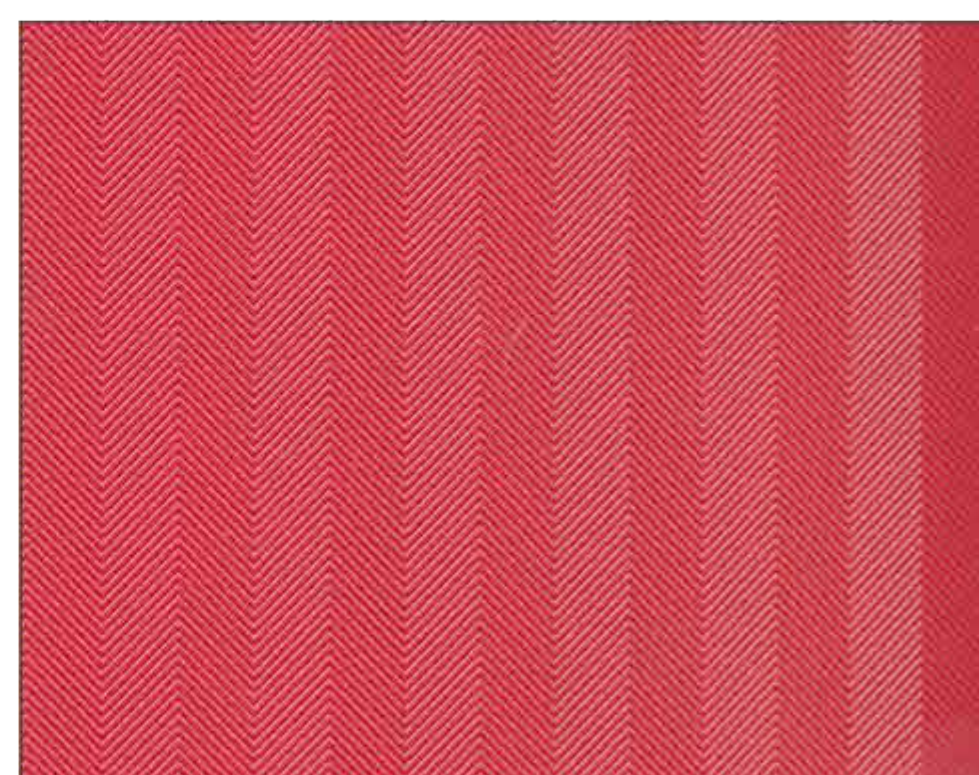
132 ON

Black



150 CR

Nagpur Orange



159 CR

Red



Shaping
Dreams

Woods



415 SD Swiss Pear



414 SD Rockford Oak



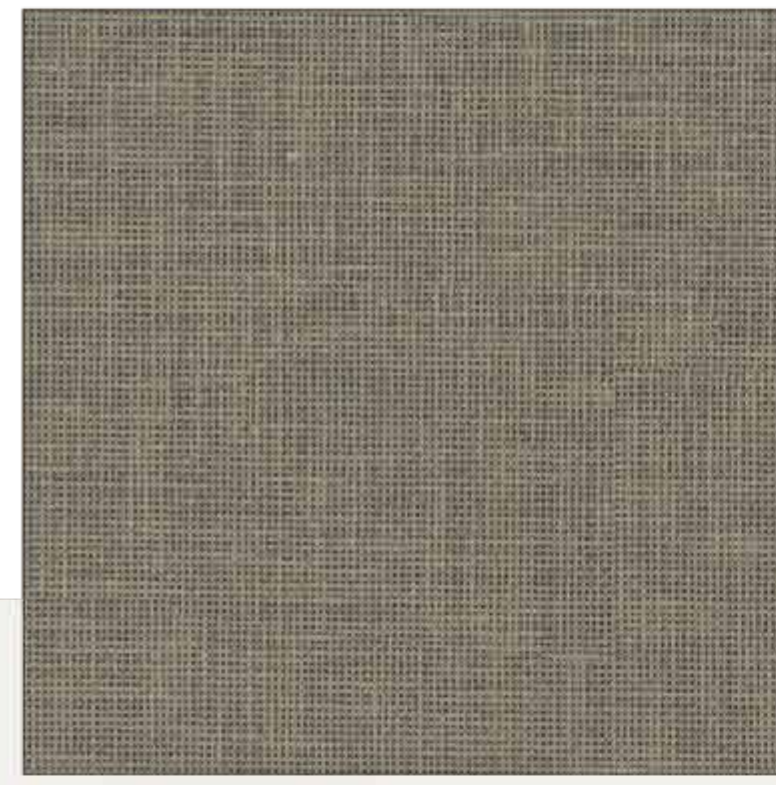
416 SD Porcini



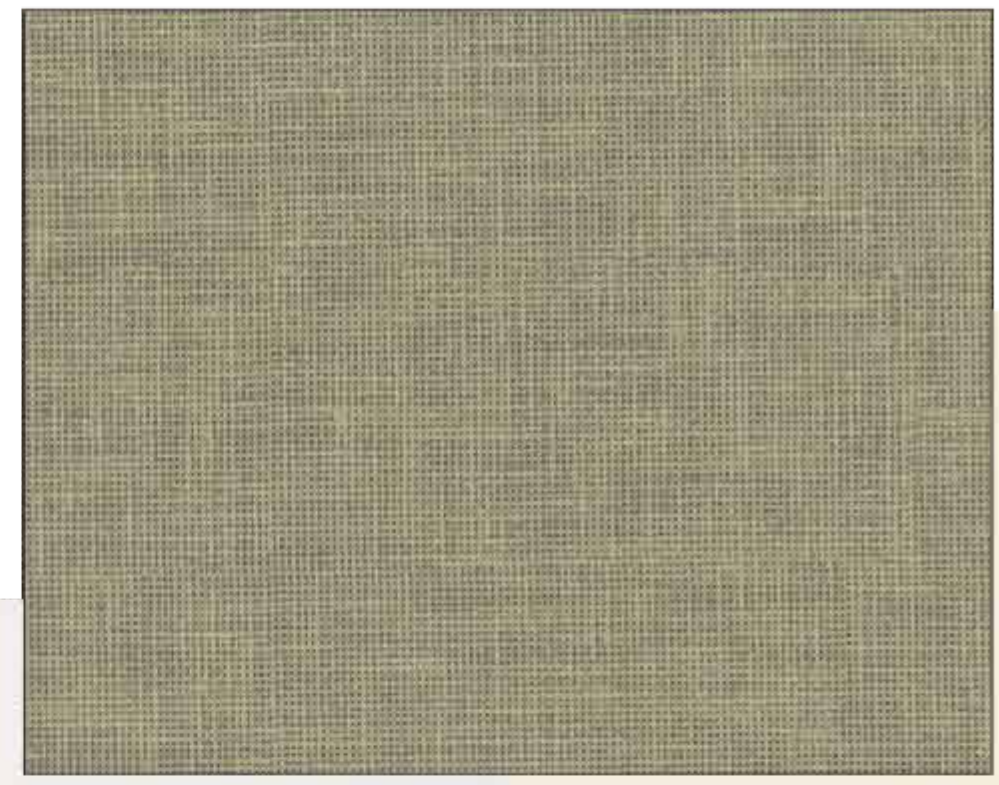
775 SD Nuvo Tkani



776 SD Gris Tkani



778 SD Dyed Sack



777 SD Oiled Sack



Creative
concept

Woods



570 SD

Platano Light



918 SD

Hawfinch



571 SD

Platano Dark



447 SD

Walnut



522 SD

Chocolate Wood



496 SD

Burbon Wood



497 SD

Charcoal Wood



834 SD Brown Acacia



833 SD Cream Acacia



339 SD Siamese



358 SD Eye Knots



823 SD Nut



495 SD Ambrosia Maple



462 SD Sukupira



357 SD Noon Knots



729 SD Castelo





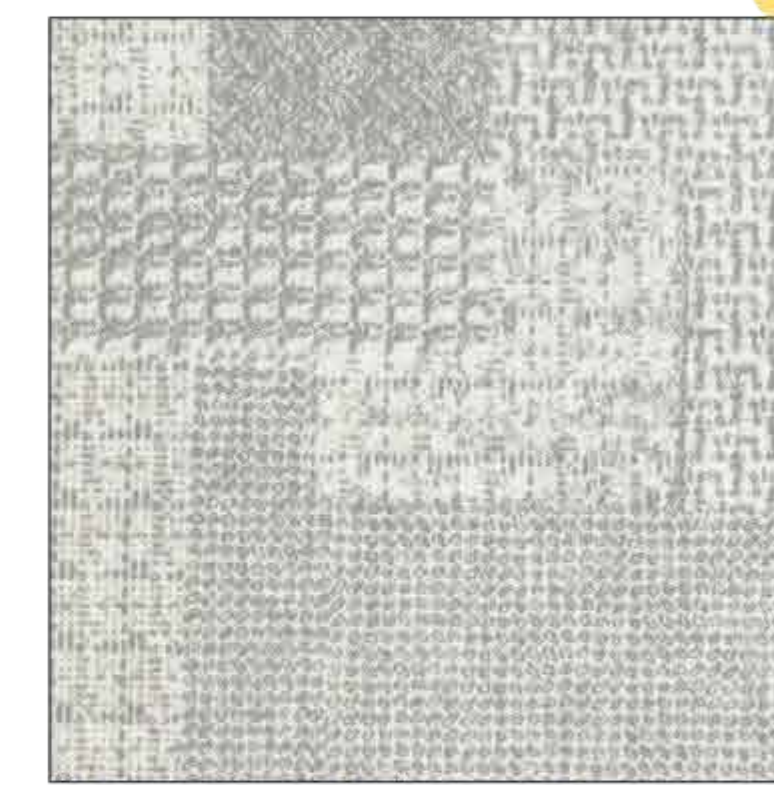
716 SD

Sea Green Stone



715 SD

Rustic Stone



829 SD

Cream Tweed



801 SD

Terrazo



802 SD

Bainbrook Brown



803 SD

Stone MIne



830 SD

Grey Tweed



804 SD

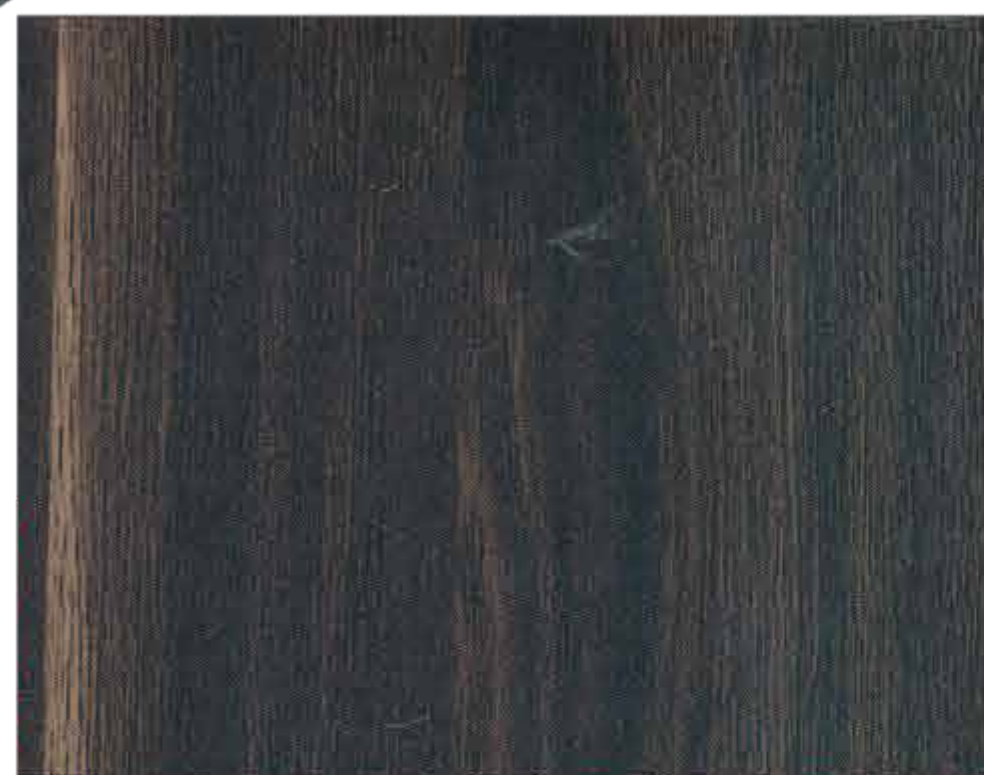
Sea Stone



831 SD

Brown Tweed

Woods



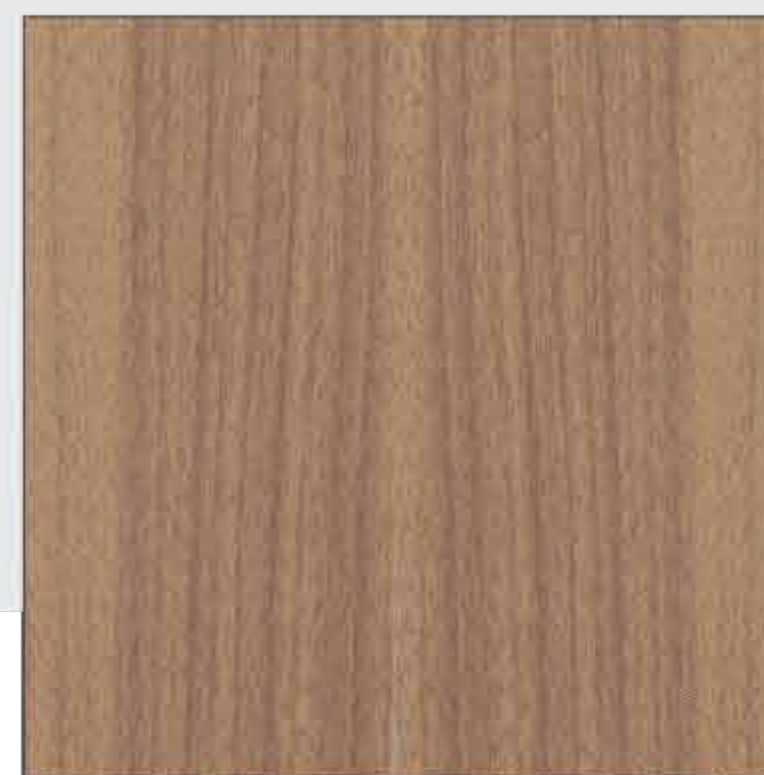
771 SD

Florence Walnut



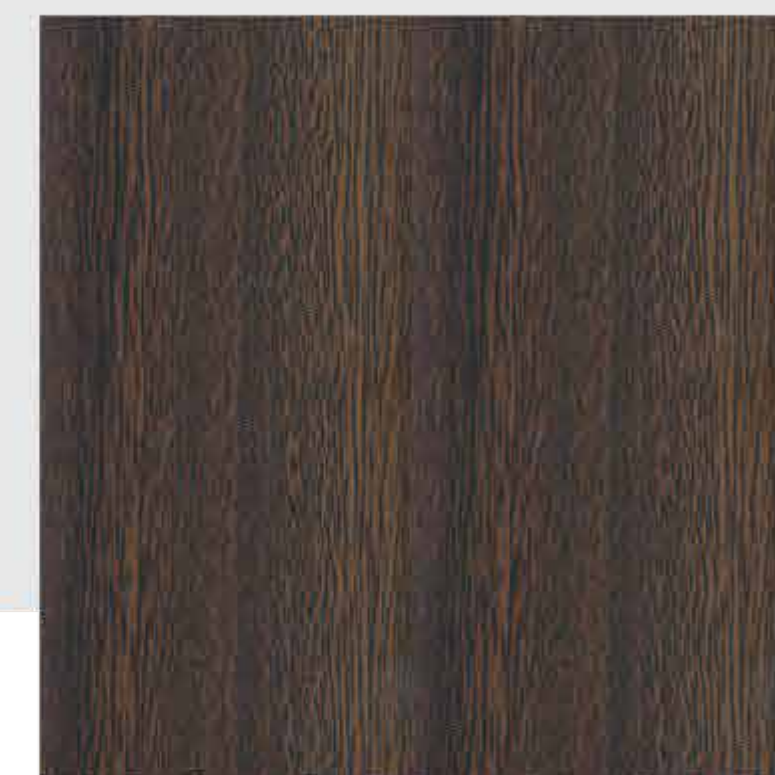
355 SD

Cappuccino Oak



762 SD

Spinoso



684 SD

Rich Olive



450 SD

Walnut Pear



451 SD

Jungle Walnut



712 SD

Spruce



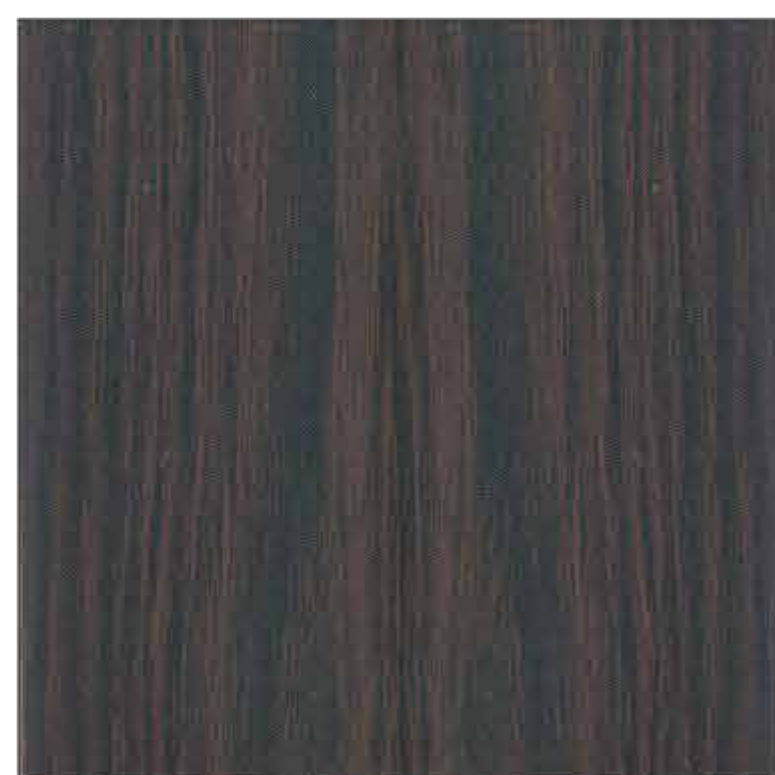
728 SD

Morella



491 SD

Silver Pine



492 SD

Alaska Pine



710 SD

Light Olive



711 SD

Dark Olive

Shaping

Dreams

Amazing
experience

Woods



353 SD

Cafe Oak



352 SD

Yellow Oak



532 SD

Dark Ash



579 SD

Vintage Walnut

inspiring
— Living —



356 SD

Saw Cut Oak



354 SD

Rosy Oak



772 SD

Sicilian Walnut



730 SD

Retro Teak



489 SD

Polar Oak



490 SD

Classic Oak



493 SD

Light Riftwood

Creative
— concept —



765 SD

Myrica



585 SD

Dyed Cedar



487 SD

Dark Amazonic



576 SD

Japanese Birch



535 SD

Legno Fine Line



475 SD

Brown Oak



774 SD

Albizia



486 SD

Light Amazonic



521 SD

Victorian



484 SD

Light Linosa



485 SD

Dark Linosa

Woods



311 SD Sizzling Bebrano



309 SD Dyed Zebrano



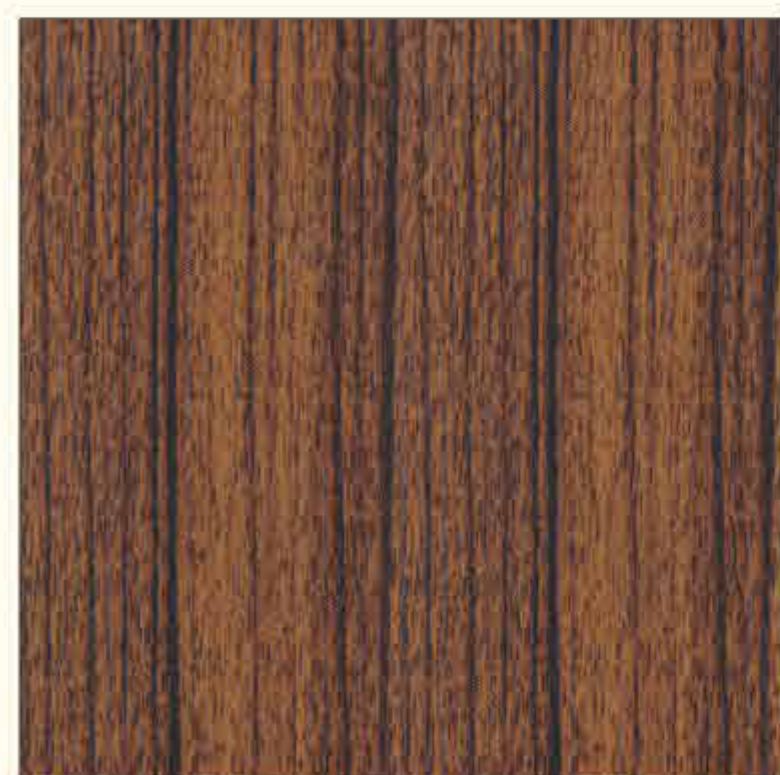
577 SD Beige Wood



449 SD Sapelli



468 SD Canada Pine



919 SD Lapwing



753 SD Oak



351 SD Raw Oak

Amazing
— experience —



318 SD Pistachio Varese



319 SD Warm Varese



703 SD Pine Dark (HZ)



702 SD Pine Light (HZ)



589 SD African Desert





825 SD

Eden Dark



583 SD

Woody Wenge



483 SD

Laurenti Wenge



754 SD

Flowery Pine



767 SD

Galaxy



634 SD

Floral Wenge



473 SD

Yellow Wenge



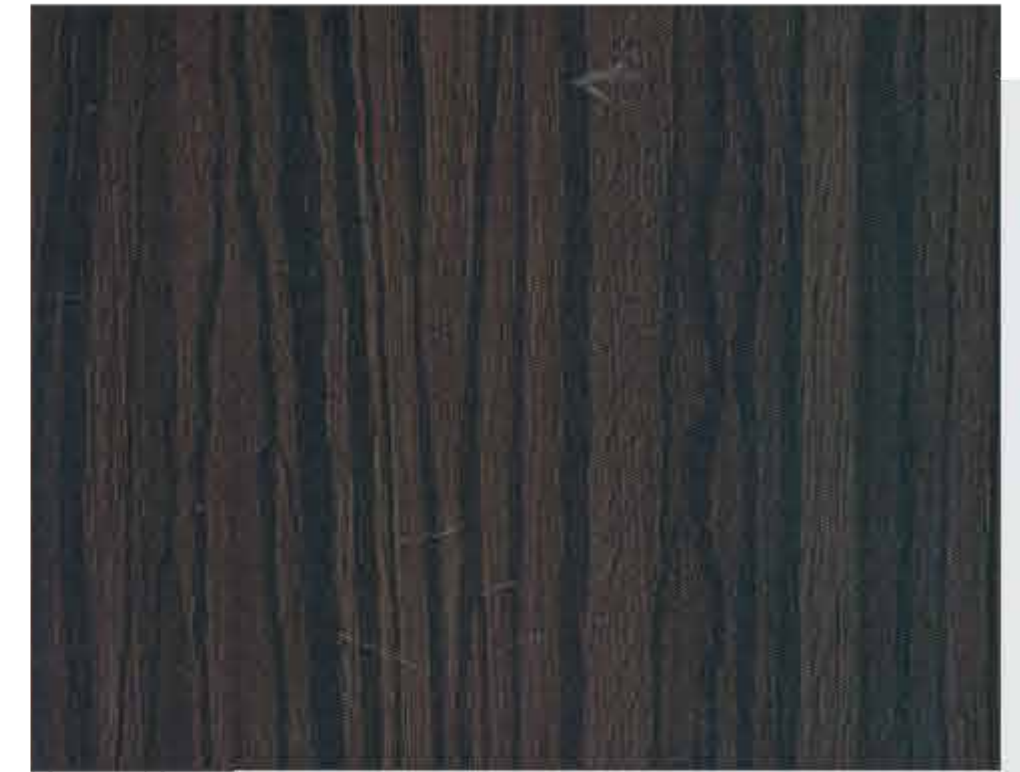
482 SD

Faux Wenge



338 SD

Cypress



752 SD

Brown Zebrano



530 SD

St. Line Wenge



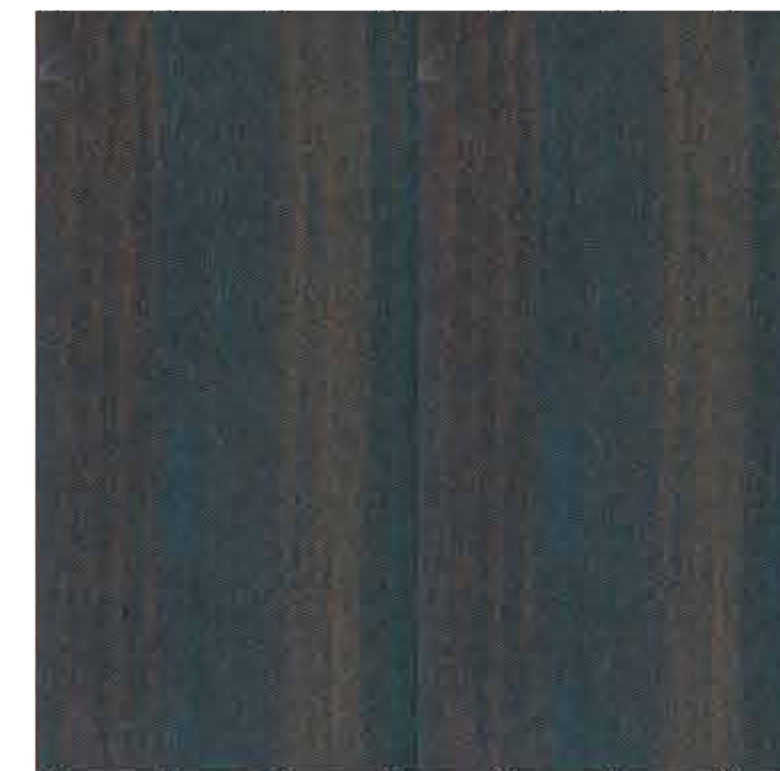
564 SD

Fine Wenge



586 SD

Ancient Oak



768 SD

Rain Forest



534 SD

Fine Line Dark



764 SD

Seronita Dark



763 SD

Seronita Light



714 SD

Lowell



581 SD

Dark Rift



828 SD

Gold Carnation



827 SD

White Carnation



826 SD

Purple Carnation



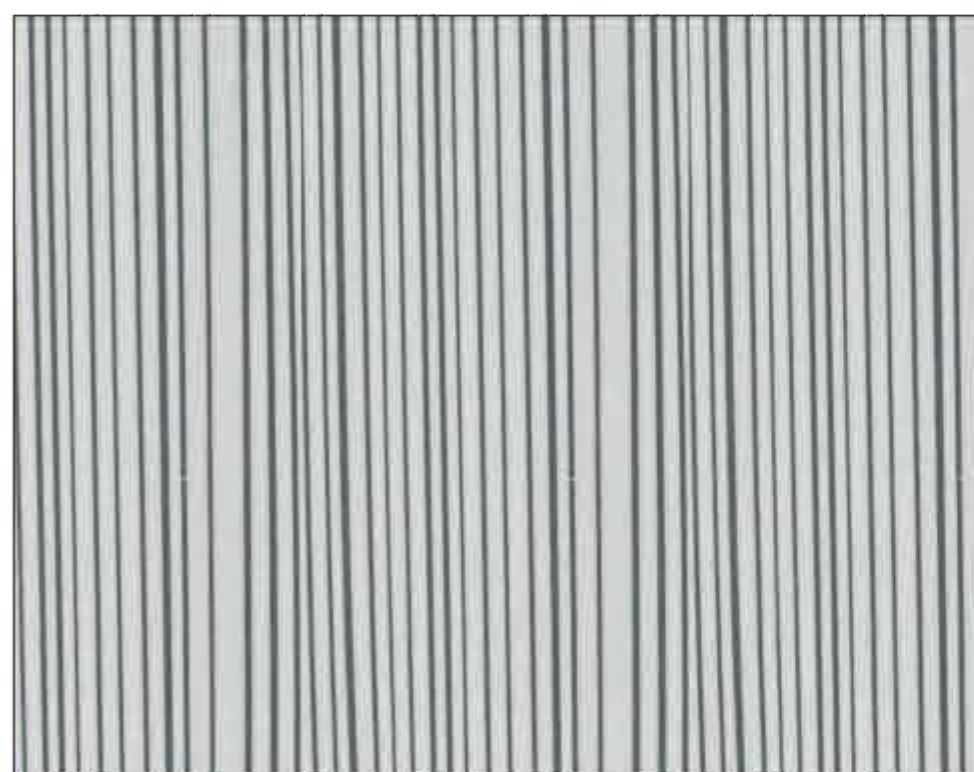
509 SD

Slub



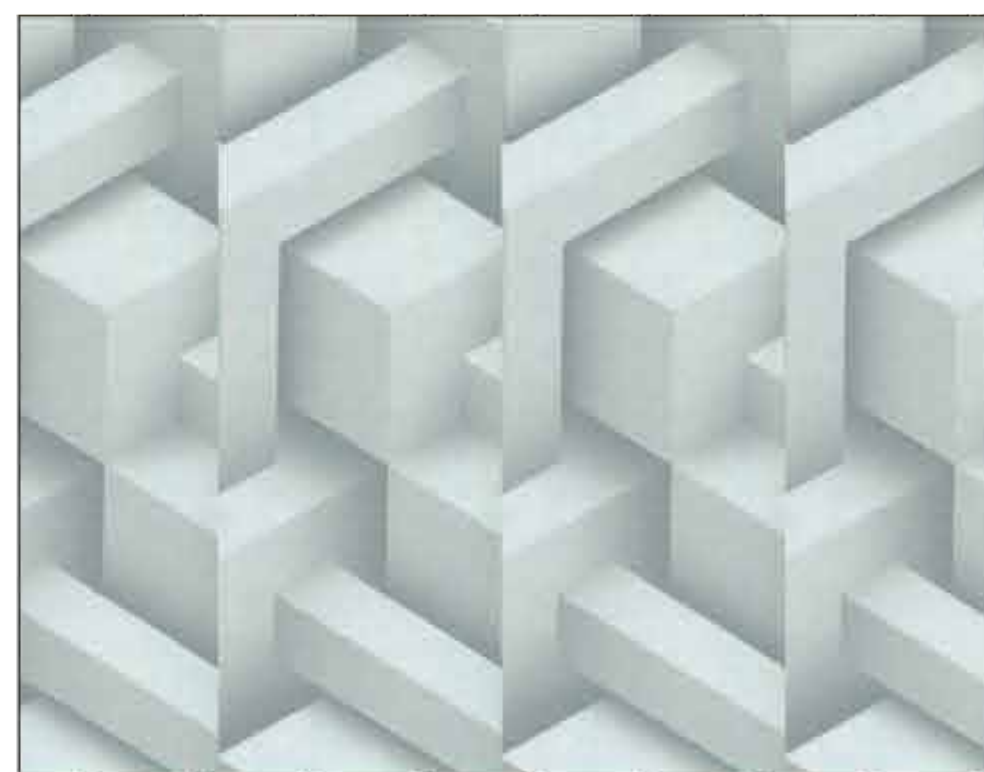
717 SD

Linen



314 SD

Barcode



738 SD

Maze



310 SD

Ripe Bamboo



820 SD

Magnolia



331 SD White Syca Maple



448 SD Pear Wood



498 SD Lotus Mahogany



437 SD Mahogany



824 SD Eden Light



347 SD Cream Rubber



733 SD 3D Effect



315 SD Light Ligure



481 SD Pearl Grey



818 SD Black Hairline



832 SD Tassili



The expression of original ideas





Future
— design —



598 SD

Syca Feel



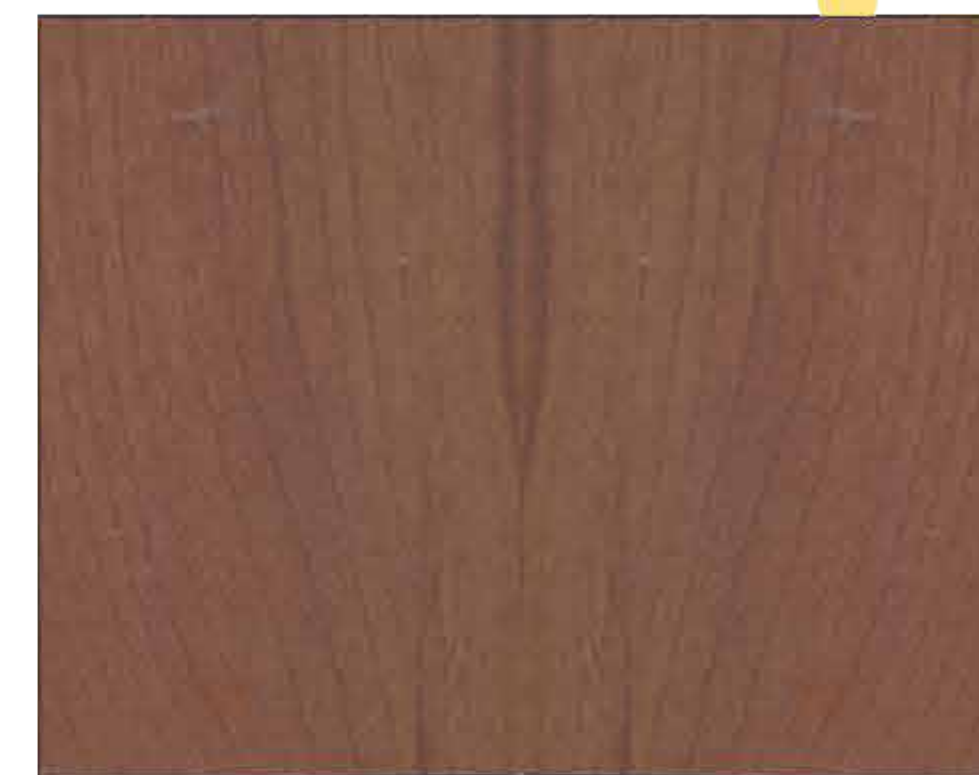
587 SD

Dyed Syca



335 SD

Cherry Beech



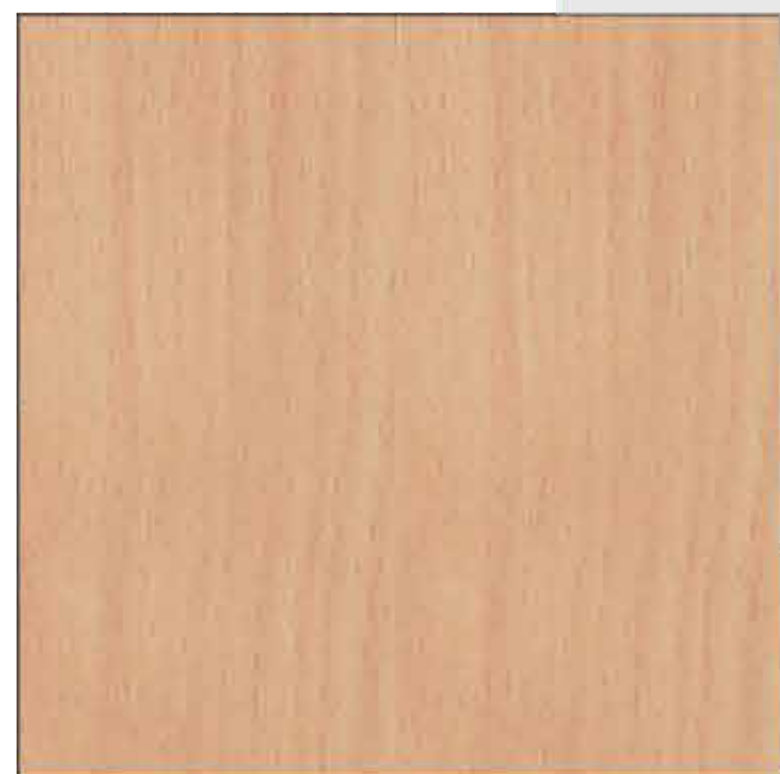
770 SD

Indiana Cherry



343 SD

Sandy Beech



345 SD

Coffee Beech



332 SD

Cyca Maple



631 SD

Match Beech



307 SD

Dusk Maple



630 SD

Match Teak



412 SD

Oxford Cherry



709 SD

Chess



133 SD

Chalk Board



129 GL

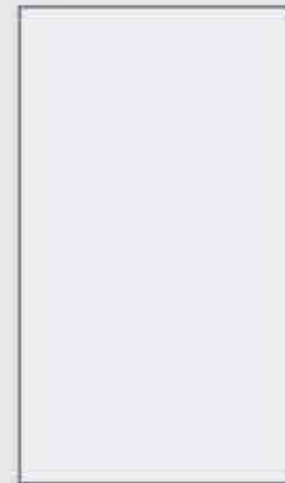
Graphic Board



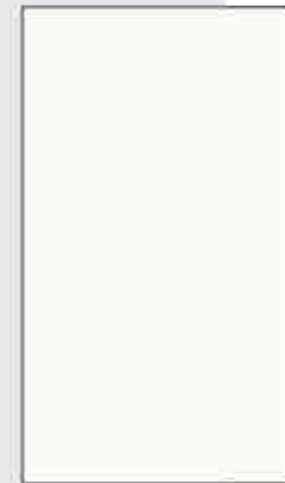
111 GL

Marker Board

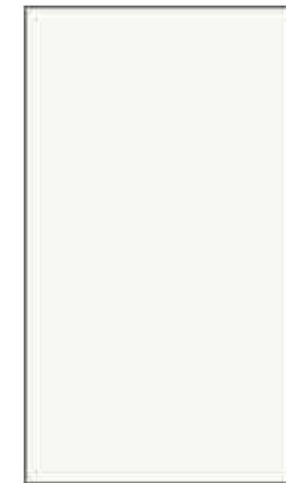
Solid colours



101 SD Super White



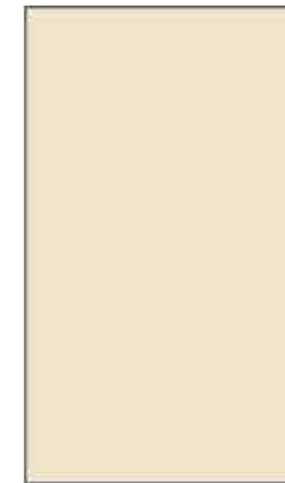
128 SD Canadian White



102 SD Frosty White



103 SD Mysore Ivory



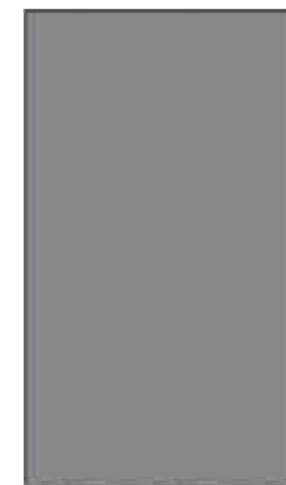
104 SD Ivory



106 SD Silver Grey



167 SD Cloudy Grey



166 SD Dark Grey



108 SD Slate



132 SD Black



171 SD Pinkish



158 SD Pink



115 SD Bloody Mary



156 SD Coffee



170 SD Spring White



164 SD Sapphire Blue



155 SD Electric Blue



150 SD Nagpur Orange



172 SD Greeny



159 SD Red

Network



PROPERTIES OF ASIS PRIME LAM 0.8MM DECORATIVE LAMINATES ALSO CONFIRMS TO INTERNATIONAL STANDARDS

S.No.	Properties	Specified as per IS 2046-1995	ASIS Prime Lam 0.8 mm
1	Thickness (in mm)	0.8mm (±0.1)	Complies
2	Resistance to Surface Wear (Rev.)	350	>350
3	Resistance to Immersion in Boiling Water	- Mass Increase %	<8.0
		- Thickness Increase %	<9.0
4	Resistance to dry heat at 180°C	Should pass test	Complies
5	Dimensional Stability at Deviated Temperature	- Longitudinal %	<0.45
		- Transverse %	<0.70
6	Dimensional Stability at 20°C	- Lengthwise %	<0.30
		- Crosswise %	<0.45
		- Thickness %	<0.45
7	Resistance to Impact by small diameter ball (N)	20 (Min)	>20
8	Resistance to Cracking	Should pass test	Complies
9	Resistance to Scratching (N)	2 (Min)	>2
10	Resistance to Staining	A) Acetone	5
		B) Coffee	5
		C) Sodium Hydroxide - 25% Solution	5
		D) Hydrogen Peroxide - 30% Solution	4
		E) Shoe Polish	4
		F) Citric Acid - 10% Solution	4
11	Resistance to color change	Wool Standard	
		1. In Xenon light	6
12	Resistance to Cigarette burns	2. In Enclosed Carbon ARC light	5
			3
13	Resistance to Steam	4	4
14	Appearance	Free from surface defects	Complies



Call us for more information on our
TOLL FREE NO. 1800228485
 From MTNL & BSNL Network Only

ASIS PRIME LAM

0.8 MM DECORATIVE LAMINATES



MAKE
YOUR
OWN
TRAIL

LOW THE PATH
DONT FOL THE TRAIL
BLAZE

For Inquiries:

- Ahmedabad - 09327394717
- Chennai - 08754425123
- Hyderabad - 08790996379
- Lucknow - 09305567929
- Pune - 09322442605
- Bangaluru - 08861300376
- Dehradun - 09359955576
- Indore - 09752497971
- Mumbai - 09322442605
- Raipur - 09752497971
- Bhubaneshwar - 09338444044
- Delhi - 08527593011
- Jaipur - 09001991052
- Nagpur - 09004445692
- Ranchi - 09309953002
- Chandigarh - 09316141613
- Guwahati - 09331707878
- Kolkata - 09331707878
- Patna - 09331707878



Shirdi Industries Ltd.
(An ISO 9001:2015 Certified Company)

Head Office:

'A' Wing, 2nd Floor, Mahatre Pen Bldg., Senapati Bapat Marg, Dadar (W), Mumbai 400 028. Maharashtra, INDIA.
Tel.: +91-22-2431 8550 (10 Lines) Fax: +91-22-2431 2200

Central Marketing Office:

18, Prime Centre, 2nd Floor, S.V. Road, Santacruz (W), Mumbai 400 054. Maharashtra, INDIA.
Tel.: +91-22-6710 1111 Fax: +91-22-6710 1122

Plants:

• Sector 9, Plot No. 1, IIE Sidcul, Pantnagar, District: U.S. Nagar, Uttarakhand, INDIA.

Website: www.asisindia.com • E-mail: corporate@asisindia.com